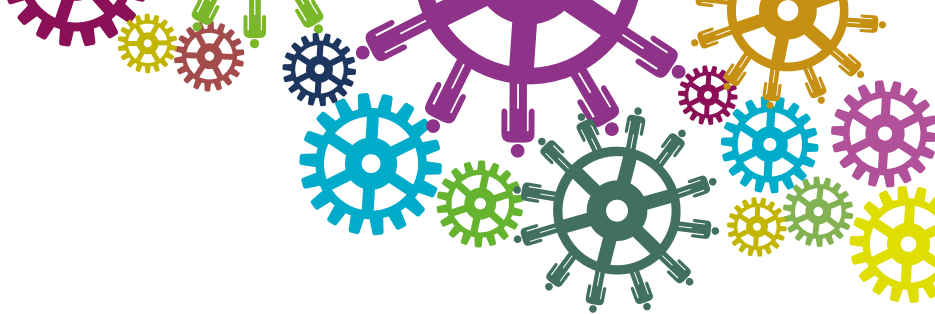


MEET THE FUNDER



Armagh City, Banbridge & Craigavon Borough Council

Community Development

The Community Development Department works to improve quality of life and promote Good Relations for all of the residents in the ABC Borough. This work is delivered in partnership with a wide range of statutory and voluntary organisations and through our Community Development Officers, PCSP Staff, Health Inequalities Team, Neighbourhood Renewal Team, Community Centres, Town Halls and the Council's Financial Assistance grant programme.

- armaghbanbridgecraigavon.gov.uk/communitydevelopment
- Glen.Dickson@armaghbanbridgecraigavon.gov.uk

Economic Development

Enterprise Support Service | Digital Transformation Flexible Fund (DTFF) | Urban ABC | Rural business engagement Food Heartland | Membership of Business Partnership Alliance, Town Centre Chambers of Commerce Labour Market Partnership

- armaghbanbridgecraigavon.gov.uk/business
- economicdevelopment@armaghbanbridgecraigavon.gov.uk

Financial Assistance Programme

FAP offers financial assistance to eligible groups in the voluntary, community and social enterprise sector. We usually deliver on 3 calls for Revenue grants, along with a Large and Small capital grants and a Civic Representation grant call each year.

- armaghbanbridgecraigavon.gov.uk/communitygrants
- fap@armaghbanbridgecraigavon.gov.uk

Fit for Future

Fit for Future grants of up to £20,000 (or up to 80%) to bring vacant commercial premises back into use. To be eligible, properties must have been vacant for 2+ years and be located within a settlement area in ABC Borough.

- armaghbanbridgecraigavon.gov.uk/fit-for-future
- fitforfuture@armaghbanbridgecraigavon.gov.uk

GrantFinder

GrantFinder search

- armaghbanbridgecraigavon.gov.uk
- Jillian.leathem@armaghbanbridgecraigavon.gov.uk

Participatory Budgeting

- Take £500+ is a Participatory Budgeting process which means that local people get to decide how public funds are used to address needs in their area.
- Communities can apply for up to £1000 for a project they think will benefit their area - and best of all, it is the local residents who decide which projects should go ahead!
- Children and young people aged eight and above can also form a group and apply for funding. If you are under 18 you will need an Adult Sponsor to support your application and to help develop and deliver your idea.
- Projects must benefit people in the Armagh, Banbridge and Craigavon Borough and be in line with one or more of the Take 5 Ways to Wellbeing and the overall ethos of Take 5.

- armaghbanbridgecraigavon.gov.uk/communityplanning
- communityplanning@armaghbanbridgecraigavon.gov.uk

Place Plans

The aim of place shaping within Community Planning will be:

- To improve the economic social and environmental well-being of the selected 'place', through harnessing place shaping powers and functions within Council and from partners.
- To ensure that the aspirations of the community plan are realised at a local level, and bring together other borough wide plans to life locally to include spatial elements and following key messages from the Council's preferred options paper.

- armaghbanbridgecraigavon.gov.uk/placeshaping
- communityplanning@armaghbanbridgecraigavon.gov.uk

Sports Development / ABC Sports Forum

The ABC Sports Forum are a voluntary body that provide a voice for local sport working closely with the Council's Sports Development Department.

They do this through the delivery of the following key areas

- Talented Athlete Grants
- Club Development Grants
- Coach Education and Club Development Programme
- Sports Development Ezine highlighting programmes, events, funding opportunities etc

The Sports Development team can support with grant application forms, supporting the development of clubs and the formation of new clubs, signposting and establishing links.

- armaghbanbridgecraigavon.gov.uk/abc-sports-forum
- sarah.aiken@armaghbanbridgecraigavon.gov.uk

MEET THE FUNDER



ABC Community Network

Support community groups apply for grants and write funding applications.

🌐 abccommunitynetwork.com
✉️ emma@abccommunitynetwork.com

Banbridge District Enterprises Ltd

Support for business starts and business growth.

🌐 bdelonline.com
✉️ ciaran@bdelonline.com

Community Advice ABC

Independent and impartial advice for people who live in the Armagh Banbridge Craigavon Council area

We provide free advice which is independent, confidential and impartial to everyone on their rights and responsibilities, including benefits, debt and family issues. Our highly trained Advisers will help guide you through any challenge you may be facing.

🌐 adviceabc.co.uk
✉️ contact@adviceabc.co.uk

Community Foundation NI

A range of grants that fund across various themes including poverty, digital inclusion, health, social justice and communities. Majority are small-med grants awarding between £1,500 - £5,000.

🌐 communityfoundationni.org
✉️ applications@communityfoundationni.org

Community Relations Council

Community Relations Council (CRC) is an Arm's Length Body of The Executive Office (TEO), a Department of the Northern Ireland Executive, and a catalyst for good inter-community and inter-cultural community relations work in the region. CRC provide a range of funding to enable voluntary and community sector organisations deliver Good Relations activity.

🌐 community-relations.org.uk
✉️ pkillen@nicrc.org.uk

Go Succeed, NI Business Support

Go Succeed is the new go-to source for expert business advice led by Northern Ireland's eleven local councils. Whether you're a budding entrepreneur just starting out; are looking to grow your business; or are planning to scale up; our team of industry experts will provide tailored support and guidance to help you achieve your business goals.

🌐 go-succeed.com
✉️ ciaran@bdelonline.com

Groundwork NI

The Aughrim Landfill Programme aims to support projects working in the conservation and promotion of biodiversity projects and protection of social environment.

Tesco Stronger Starts supports thousands of local community projects and good causes. The programme is open to all schools, registered charities and not-for-profit organisations, with priority given to projects that provide food and support to young people.

The programme is open to all schools, registered charities and not-for-profit organisations, with priority given to projects that provide food and support to young people.

🌐 groundwork.org.uk/northern-ireland
✉️ info@groundworkni.co.uk

Historic Environment Division

The Department's principal means of providing support to you, if your heritage assets need repair or if you want to develop an idea to realise the wider value of our heritage, is through our Historic Environment Fund (HEF). This is divided into four streams: Research, Repair, Regeneration and Revival.

🌐 communities-ni.gov.uk/topics/historic-environment-funding-grants
✉️ historicenvironmentfund@communities-ni.gov.uk

Invest Northern Ireland

A wide range of supports available for qualifying businesses.

🌐 investni.com
✉️ stephen.fullerton@investni.com

James Kane Foundation

The James Kane Foundation is an independent Charity. The Foundation has recently moved to an online grant application process. Expressions of Interest are open from Monday 6 January 2025 and will close on Friday 28 March 2025 at 4pm.

Expressions of Interest will be reviewed on a fortnightly basis during this application period. We will let you know asap once a decision is made.

The Foundation will focus on two themes:

- Enabling STEM related education and career opportunities.
- Enabling students to make the correct choices between employment/career and higher-level education pathways.

🌐 jameskanefoundation.org
✉️ manager@jameskanefoundation.org

MEET THE FUNDER



Keep Northern Ireland Beautiful

The Small Grant Scheme delivered by Live Here Love Here offers funding for projects that revitalise shared greenspaces, benefitting the community and the environment.

This grant scheme seeks to increase civic pride and improve the quality of the local environment; transform underused spaces into vibrant and valued community places, and improve the health and wellbeing of communities whilst helping to improve public spaces. It also seeks to support environmentally focused actions and help to increase local biodiversity.

🌐 liveherelovehere.org/cgi-bin/greeting?instanceID=1
✉️ enquiries@liveherelovehere.org

National Churches Trust

The National Churches Trust offers several grant programmes to support the repair, maintenance, and enhancement of church buildings across the UK. These grants are available to listed and unlisted places of worship of any denomination. Treasure Ireland Grants support church projects in Northern Ireland, including maintenance and urgent repair work of up to £10,000.

🌐 nationalchurchestrust.org
✉️ nina.mcneary@nationalchurchestrust.org

National Garden Scheme NI

Provision of grants up to £5,000 for gardening projects carried out by small scale community groups perhaps to rejuvenate a derelict piece of land or perhaps grow fresh produce for local food banks.

🌐 ngs.org.uk
✉️ patricia.clements@ngs.org.uk

NI Housing Executive

The Housing Executive Private Sector Grants team provide grants to address fuel poverty by making your home more energy efficient and adaptation grants to enable persons with a disability to live as independently as possible and remain in their own home. Information on our free NI Energy Advice Service, which can be reached on 📞 **0800 111 44 55**.

🌐 nihe.gov.uk/housing-help/grants
✉️ south.grants@nihe.gov.uk

Rural Community Network NI

Rural Community Network is a regional voluntary membership based organisation supporting rural communities across Northern Ireland. RCN works with rural communities to address issues relating to poverty, inequality, community and good relations and strives to develop the capacity and skills of groups to articulate their voice at a policy influence level.

🌐 ruralcommunitynetwork.org
✉️ yvonne@ruralcommunitynetwork.org

Rural Support NI

Rural Support NI helps farmers and rural dwellers in Northern Ireland who were affected by the severe crisis in the agricultural industry.

Our mission is to provide professional and practical support to farmers, farm families and farm businesses throughout Northern Ireland.

The organisation's main areas of charitable activity and services include the provision of a Support Line service; business, finance, technical and counselling mentoring; training programs to develop mental resilience and business knowledge for those working in the Agri-sector; and delivery of the Social Farming Support Service and various social innovation projects to support the Agri-rural community.

Rural Support NI is addressing the need for farmers and members of farming families to seek free, confidential, impartial guidance and support through our support line and farm support mentoring/counselling, whilst being acutely aware of agricultural policy changes and increasing pressures in all aspects of farming, should that be livestock or arable, and the impact this has at farm level.

🌐 ruralsupport.org.uk
✉️ info@ruralsupport.org.uk

Southern Regional College

DfE InnovateUs | DfE Productivity Booster | Invest NI Innovation Voucher | Intertrade Ireland Innovation Boost | Intertrade Ireland Explore/Plan | Go Succeed | KTP

🌐 src.ac.uk
✉️ betterbusiness@src.ac.uk

MEET THE FUNDER



Sport NI

Small resource and capital grants (up to 5k) through our crowdfunding programme.

Other potential funding opportunities in the pipeline

🌐 sportni.net
✉️ patrickotoole@sportni.net

TADA Rural Support Network

TADA is committed to empowering rural community groups by providing comprehensive support and resources. Our mission is to foster sustainable growth and resilience in rural areas by offering guidance, capacity building workshops, and tailored advice for local initiatives. TADA can assist with funding opportunities and assisting with grant applications

🌐 tadasupportnetwork.com
✉️ info@tadarsn.com

Tesco Banbridge Extra

Stronger Starts grants, Fareshare Go, store collections for charities, small donations to charities and community group. Charity information stands in stores and community boards to promote charity and community events and campaigns.

🌐 tescostrongerstarts.org.uk
✉️ 4506@tesco.com

The Executive Office

The Central Good Relations Fund (CGRF) supports constituted voluntary and community sector groups to deliver good relations projects where there is evidence of identified good relations need.

Applications are open until 27 Jan 2025 for the delivery of projects to take place from/between 1 April 2025 - 31 Mar 2026.

🌐 executiveoffice-ni.gov.uk/articles/central-good-relations-fund
✉️ GoodRelationsFund@executiveoffice-ni.gov.uk

The National Lottery Community Fund

Awards For All - grants from £300 to £20,000

Strengthening Communities - grants from £20,001 to £500,00

🌐 tnlcommunityfund.org.uk
✉️ mark.creaney@tnlcommunityfund.org.uk

The National Lottery Heritage Fund

National Lottery Heritage Grants is our open programme for all types of heritage projects in the UK. You can apply for a grant of between £10,000 to £250,000 or from £250,000 up to £10million.

🌐 heritagefund.org.uk
✉️ emma.hannah@heritagefund.org.uk

The Woodland Trust NI

MOREwoods funding is available for any landowners or farmers to plant a woodland on their land if:

- they are not already in receipt of funding for planting a woodland our eligibility criteria are met.

Anyone can apply on behalf of the landowner, but they must have the landowner's permission.

Through MOREwoods we subsidise up to 75% of the cost of the trees, tree protection, advice and guidance if you choose to plant the trees yourself.

🌐 woodlandtrust.org.uk
✉️ northernireland@woodlandtrust.org.uk

Volunteer Now

Volunteer Now is the lead organisation for promoting and supporting volunteering across Northern Ireland. We build recognition for volunteering and celebrate the contribution volunteers make. We provide access to opportunities and encourage people to volunteer. We are a resource for volunteer involving organisations providing support on involving volunteers, governance and safeguarding.

🌐 volunteernow.co.uk
✉️ info@volunteernow.co.uk