

Armagh City, Banbridge and Craigavon Borough Council Local Development Plan



**Paper 9 : Heath, Education and Community Uses
March 2016**



PAPER 9: HEALTH, EDUCATION & COMMUNITY USES

CONTENTS	PAGE(S)
Purpose & Contents	4
Section 1: Introduction	5
Section 2: General Context	5
Section 3: Regional & Local Policy Context	7
Section 4: Health	12
Section 5: Health Proposals in ACBCBC	19
Section 6: Role of Planning in promoting health & well-being	20
Section 7: Transforming Your care (TYC) – Changing the NI Health System	21
Section 8: Education – Existing Provision in ACBCBC	25
Section 9: Education Proposals in ACBCBC	33
Section 10: Library Provision in ACBCBC	34
Section 11: Community Uses in ACBCBC	36
Section 12: Conclusions	38
Appendices	40

TABLES

Table 1: NI Agencies Responsible for Education Sectors

Table 2: Health Indicators (ACBCBC Vs NI)

Table 3: Deaths by Cause 2014 (ACBCBC Vs NI)

Table 4: ACBCBC Hospital Services

Table 5: Travel Time to Nearest Accident & Emergency Department (LGDs 2004)

Tables 6-16: School Provision & Schools Oversubscribed by Legacy Council

Table 17: ACBCBC Leisure Centre Facilities

DIAGRAMS

Diagram 1: NI LGD Ambulance Response Times (2013)

Diagram 2: Health System Under Transforming Your Care (TYC)

APPENDICES

Appendix 1: ACBCBC School Locations Maps

- **1(a): Post-primary**
- **1(b): Primary**

Appendix 2: General Practices in ACBCBC

Appendix 3: Further ACBCBC Statistics on Health & Wellbeing

Appendix 4: ACBCBC Fire Stations / Police Stations & British Army Barracks

Appendix 5: Southern Health & Social Care Trust (SH&SCT) Estates Portfolio (March 2015)

Appendix 6: Education Authority (Southern) Schools (September 2015)

PURPOSE:

- **To provide the Planning & Regulatory Services Committee with an overview of matters relating to the health, education and community uses in the Armagh City, Banbridge and Craigavon Borough Council area.**

CONTENT:

The paper provides information on:

- 1. The regional and local planning policy context for health, education and community uses in the Armagh City, Banbridge and Craigavon Borough Council area.**
- 2. An overview of the existing provision of health, education and community uses and services in the Borough and any confirmed future proposals for changes to these.**
- 3. How the new LDP can facilitate provision of health, education and community uses in the Armagh City, Banbridge and Craigavon Borough Council area.**

1.0 Introduction

- 1.1 This position paper assesses a range of public services including health, education and community uses. The provision for and planning of, health and education facilities does not lie within the remit of the Council, though it does provide support and assistance to a range of community groups, as well as maintaining buildings utilised for community uses. The Local Development Plan will safeguard or identify land for any of these uses where there are firm commitments in capital works programmes. It is also important for the Local Development Plan (LDP) to be aware of the range, provision and location of such services and to set out a Strategy to address any issues highlighted in this evidence. Consultations with the relevant health and education authorities has been carried out and details of this are provided within the paper.

2.0 General Context

- 2.1 As with NI as a whole, the ACBCBC Borough has both a growing and ageing population. In 2015 the population of the Borough is estimated at 207,800. The population is projected to increase by 14.29% (29,700) to 237,500 persons to the end of the plan period (2030). This growth rate (%) is more than double the rate of population increase projected for NI as a whole (6.64%). The proportion of those 65 and over is projected to increase over the plan period from the current 14.98% of the total population to 19.53% (over 15,000 extra people aged 65 or over to 46,390 persons). The number of those under 12 is projected to increase by approximately 900 persons over the plan period but fall in terms of percentage of the total population by 1.76% to 15.47%. The number of those aged 12-35 is projected to increase by approximately 5,200 persons over the plan period but fall in terms of percentage of the total population by 1.71% to 29.35%. The number of those aged 36-64 is projected to increase by approximately 8,900 persons over the plan period but fall slightly in terms of percentage of the total population by 0.82% to 35.85%. Although the Borough population is ageing over the plan period, it should be noted that it is still has a younger demographic than the NI average.
- 2.2 Planning for the provision of **health facilities** within the Armagh City, Banbridge and Craigavon Borough falls within the remit of the Southern Health and Social Care Trust (SHSCT). The Health System in Northern Ireland is currently being transformed under an initiative known as Transforming Your Care. The aim of this initiative is to move the emphasis of care provision away from the institutional setting and to place the focus on the individual while also encouraging the promotion of care in the community and integrated care. The potential implications that this initiative will have for planning will be discussed later in the paper.
- 2.3 **Making Life Better 2012–2023** is the public health strategic framework. The framework provides direction for policies and actions to improve the health and wellbeing of people in Northern Ireland. It builds on the *Investing for Health* strategy (2002–2012) and retains a focus on the broad range of social, economic

and environmental factors which influence health and wellbeing. It brings together actions at government level and provides direction for implementation at regional and local level. The strategy has 6 themes:

1. Giving Every Child the Best Start
2. Equipped Throughout Life
3. Empowering Healthy Living
4. Creating the Conditions
5. Empowering Communities
6. Developing Collaboration.

2.4 Planning for the provision of **education facilities** in the District is the responsibility of a number of different agencies. These agencies and their area of responsibility are laid out in Table 1 below:

Table 1: NI Agencies Responsible for Education Sectors

EDUCATIONAL SECTOR	AGENCY / AGENCIES WITH RESPONSIBILITY
CONTROLLED SECTOR (e.g. non-denominational primary and secondary schools)	<ul style="list-style-type: none"> • Education Authority (EA) – Southern Region
NON CONTROLLED SECTOR (e.g. denominational primary and secondary schools, grammar schools, Integrated schools, Irish medium schools)	<ul style="list-style-type: none"> • Department of Education (DE) • Council for Catholic Maintained Schools (CCMS) • Comhairle na Gaelscolaíochta (C'na'G)

2.5 With regard to **community uses** the Council provides a range of community facilities/venues within the Council area either via direct ownership or via financial support. The detail of these are set out in section 11 of this paper.

2.6 This position paper is intended to provide an overview of the existing provision in relation to each of the services as well as highlight any upcoming proposals for new developments which will increase or improve the level of provision in the District. Council should be aware of these matters when preparing the LDP for the area.

3.0 Regional and Local Planning Policy Context

The Regional Development Strategy 2035

- 3.1** The *Regional Development Strategy (RDS)* identifies Craigavon Urban Area, Armagh City and Banbridge as main hubs which have the ability to cluster and to capitalise on their strategic position. Craigavon Urban Area currently performs a strong sub-regional function and is the location for the District's one acute hospital. The strategic aim is to develop all the hubs into places where the greatest levels of service is provided. Therefore, the greatest degree of health provision, as well as other public services such as education, libraries and community facilities should be located within these hubs.
- 3.2** The idea of combining the three hubs within the district to form a cluster is intended to allow services to be shared between hubs and to avoid competition between neighbouring settlements. The RDS does not include a specific section relating exclusively to the promotion of health. However, at the core of the RDS is the need to promote sustainable development and the three main pillars of this are the environment, the economy and society. These three elements of a sustainable approach are important in that the improvement of each has indirect links to the improvement of health and wellbeing.
- 3.3** One of the 8 aims of the RDS is to "promote development which improves the health and wellbeing of communities." In order to realise this aim, the RDS states that *'improved health and well-being is derived not only from easy access to appropriate services and facilities, although this is important, but also from the creation of a strong economy set within a safe and attractive environment. The provision of more social and affordable housing also helps to build strong balanced communities'*.
- 3.4** In Armagh City, Banbridge & Craigavon Borough Council (ACBCBC), one third of the population lives in the rural area and importantly the RDS recognises that we must also strive to keep our rural areas sustainable and ensure that people who live there, have access to services and are offered opportunities in terms of accessing education, jobs, healthcare and leisure. Therefore access to services in the rural area in ACBCBC is important and the need to ensure that our transport and road networks are of a high standard.

A Planning Strategy for Rural Northern Ireland (PRSNi)

- 3.5** A Planning Strategy for Rural NI contains policy in relation to community needs as detailed below. This policy is intended to ensure there is sufficient land to meet the anticipated needs of the community, in terms of health, education and other public facilities. Should circumstances require that new sites are needed, land will be identified by individual site assessment or through the process of preparing a development plan.

The Strategic Planning Policy Statement

- 3.6** Within the recently published **Strategic Planning Policy Statement (SPPS)**, in the context of Public Utilities the SPPS states that LDP's should allocate sufficient land to meet the anticipated needs of the community, in terms of health, education and other public services (Page 95). The SPPS also states that the planning system has an active role to play in helping to better the lives of people and communities and in supporting the Executives key priority of improving health and well-being. The document goes on to list a number of ways in which the planning system can contribute to improved health either through the plan making process or through the decision making process:
- safeguarding existing and facilitating quality open space, sport and recreation provision of new areas of outdoor open space;
 - providing safe and secure age-friendly environments;
 - encouraging and supporting quality, environmentally sustainable design;
 - better connected communities with safe pedestrian environments;
 - better integration between land-use planning and transport;
 - facilitating the protection and provision of green and blue infrastructure
 - supporting the provision of jobs, services and economic growth;
 - supporting delivery of homes to meet the full range of housing needs, contributing to balanced communities; and
 - supporting broader government policy aimed at addressing for example obesity, and health and well-being impacts arising through pollution.
- 3.7** The SPPS advises that the plan making process may involve liaison with bodies and agencies to understand and take account of health issues and the needs of local communities where appropriate. It also directs that where appropriate the council may bring forward local policies that contribute to improving health and well-being as well as those which promote social cohesion and the development of social capital, the provision of health, security, community, and cultural infrastructure and other local facilities.

Existing Area Plans

- 3.8** Within the **Armagh Area Plan 2004** there are no specific planning policies or zonings relating to health, education or community uses.
- 3.9** The **Craigavon Area Plan 2010** contains the strategic policy **COM1: Community Uses** which sets out a number of criteria against which applications will be assessed. Development Opportunity Sites have been identified in Lurgan and Portadown where community use would be encouraged either on its own or as part of a mixed-use scheme. The Plan also identified an area of land at Tarry Lane, Lurgan for Education uses for the purposes for building a new school for St Teresa's primary school. However, instead of developing this zoned site, St. Teresa's have opted to rebuild the school on the original Cornakinnegar Road site.

- 3.10** The **Banbridge Newry and Mourne Area Plan 2015** contains the strategic policy ECU 1 Education, Health, Community and Cultural Uses which sets out a number of criteria against which applications will be assessed. Development Opportunity Sites have been identified in Banbridge and Dromore which would be suitable for Community Use, either individually or part of a mixed use scheme. The Plan also zoned 2 sites for Education in Dromore (DE27 & DE28).

Relevant Council & legacy Council Plans and Strategies

Armagh Banbridge Craigavon Council Corporate Plan 2015-2017

- 3.11** In regard to local plans and strategies, the overarching aim of the Council's Corporate Plan for Armagh, Banbridge and Craigavon is to – Prosper the Place, Serve the People & Strengthen our Position'. The Council has three corporate priorities which focus efforts and resources around *'place, people & position'*.
- 3.12** In relation to the health element of this paper, the corporate priority around people is to improve everyone's quality of life, opportunity, safety and well being. The Plan states in the 'Serve the people' commitment that: *'We will provide people centred services that will improve quality of life and health and well-being. It also includes in the Well Being priority to:*
- *Promote well-being and reduce health inequalities;*
 - *Support people to be safe, healthy and productive; and*
 - *Facilitate healthy lifestyle choices.*
- 3.13** In relation to the community element of this paper, the Plan commits to:
- *Create welcoming communities and neighbourhoods; and*
 - *Develop community planning capacity and involvement in local decision making.*
- 3.14** In relation to the education element of this paper, the Plan includes the following vision:
- *Our Vision; Young people will be able to realize their potential and develop their dreams through first class education and training provision, employment opportunities, as well as participating in sport, arts and community life.*

Regeneration & Development Strategy (R&DS) 2015-2020

- 3.15** The Regeneration & Development Strategy (R&DS) aligns itself to the Corporate Plan and builds upon the three strategic priorities to Prosper the Place, Serve the People and Strengthen our Position. The R&DS sets out a clear vision for the Council's future, a framework for a more joined up approach to economic development and regeneration and a process for effective implementation of a strategic action plan.
- 3.16** Under its Strategic Themes, the R&DS Plan aligns itself to the Council's three Corporate Priorities which will focus our efforts and resources:
- *Place - increasing prosperity through developing the economy, employment, connectivity and environment; and*
 - *People - improving everyone's quality of life, opportunity, safety and wellbeing.*

- 3.17** The R&DS acknowledges the Borough skill/education shortfalls and these *'skills will not be addressed without better cooperation between education, training and employers'*. The R&DS Action Plan includes:
- *Development of a council led 'Employability & Skills Forum' bringing together key local stakeholders.*
- 3.18** In relation to the community element of this paper, the R&DS Plan acknowledges that *'Poor community capacity remains a problem in parts of the Council area'* and states *'There are a range of spatial considerations for the Regeneration and Development Strategy, for example, the provision of housing, economic growth and development, infrastructure, community facilities and the protection of environmental assets.'*
- 3.19** **Armagh City Centre Masterplan 2030** was updated by Paul Hogarth consultants in March 2016 and has a number of Masterplan aims and objectives. One objective is to *'enhance the quality of life for Armagh's residents'*. Of relevance to our health, education and community paper within this objective is:
- *Provide safe and shared environments for all members of the community, day and night support and enhance the provision of healthcare and education;*
 - *Suitable accommodation and targeted development of education and skills must therefore be sought with the long term potential to attract university level education back to Armagh;*
 - *Provide safe and shared environments for all members of the community, day & night.*
- 3.20** **Banbridge Town Centre Masterplan** (was updated by AECOM consultants in March 2016 and contains a number of objectives of relevance to this paper:
- *Objective 3: Create an enriched town centre experience by reinvigorating opportunity sites & the evening economy (including the former health site on the Scarva Road); and*
 - *Objective 4: Improve community, leisure and recreation services and facilities.*
- 3.21** **The Craigavon Integrated Development Framework (CIDF)** was updated by Paul Hogarth consultants in March 2016. The CIDF places an emphasis on physical interventions and is a strategy for the future sustainable growth of the built environment. However the regeneration of the three centres will also rely on a series of complementary initiatives which focuses on non-physical issues. It is here that the CIDF can have a positive influence on matters such as employment creation, education, social care and community relations.
- 3.22** The key recommendations in the CIDF document are as follows: "3C" – the 3 town centres as the complete package:
- *between the three town centres, there will be the complete range of commercial, social, cultural and community activities; and*
 - *Central Craigavon Town Centre as a focus for education & social infrastructure.*

- 3.23** In Central Craigavon, the Council is developing plans for a Leisure Centre on the site of the current watersports centre at Craigavon Lakes (southern lake). Additionally, the Southern Regional College are progressing plans for a further education campus along the shores of the Craigavon Lake (southern lake).

Armagh City, Banbridge & Craigavon Borough Council Community Plan

- 3.24** From April 2015, the Council has a statutory duty to prepare a community plan in consultation with other providers (including the Education authority, Health & Social Care Trust, PSNI, NI Fire & Rescue Service). There is a statutory link between the Community Plan and the LDP.
- 3.25** Community planning involves integrating all the various streams of public life (such as services and functions that are delivered in an area) and producing a plan that will set out the future direction of a council area. Working with statutory bodies, agencies and the wider community, the council will develop and implement a shared vision to deliver real improvements for local people.
- 3.26** The community plan will be considered under a number of themes, one of which is health & well-being. To consider these themes, a number of thematic groups will be established.

4.0 HEALTH

General Health levels

- 4.1 In general, levels of health in ACBCBC are better than the rest of Northern Ireland, as a whole. Life expectancy in the Council Area is 78 for men and 82.5 for women, compared to the Northern Ireland average of 77.7 for men and 82.1 for women.¹ See Appendix 3 for further key ACBCBC health & well-being statistics.
- 4.2 Table 2 below compares the levels of health enjoyed in ACBCBC to the rest of Northern Ireland as published in March 2015. It uses 26 health indicators and is taken from a report into health inequalities in Northern Ireland². For the purposes of this paper, the level of health enjoyed will be simply described as “better (10-20%),” “slightly better (1-9%),” “same: (0-1%),” “slightly worse (1-9%) or “worse (10-20%)”. This description relates to the Borough average compared to the NI average.

Table 2: Health Indicators (ACBCBC Vs NI)

Health Indicator	ACBCBC compared to Northern Ireland as a whole	ABC Vs NI *
Suicide Rate	Slightly Better	-2%
Admission Rate – Drug Related	The same	0%
Admission Rate – Alcohol related	Better	-10%
Admission rate – Self Harm	Slightly worse	+3%
Prescription Rate – mood and anxiety disorders	Slightly Better	-6%
Death Rate - Preventable	Slightly Better	-8%
Breastfeeding on discharge	Slightly Better	-4%
Potential Years of Life Lost	Slightly Better	-3%
Death Rate – Avoidable	Slightly Better	-8%

¹ NISRA 2010 - 2012

² Health Inequalities – Northern Ireland and Social Care Inequalities Monitoring System – Sub Regional, March 2015, p.101-104

Death Rate – smoking related	Slightly Better	-5%
Death Rate – Cancer	Slightly Worse	+3%
Admission Rates – Emergency	Slightly Better	-6%
Admission Rates - Respiratory	Better	+10%
Prescription Rate - Statin	Same	+0.7%
Death Rate – Amenable	Slightly Better	-2%
Death Rate – All Age, All-Cause Mortality	Slightly Better	-2%
Admission Rate – All	The same	+0.1%
Low Birth Weight	Slightly Better	1%
Male Life expectancy	The same	-0.3%
Death Rate - Respiratory	Better	-10%
Death Rate - Circulatory	Slightly Worse	+4%
Admission Rate – Circulatory	Slightly Worse	+4%
Incidence Rate - Cancer	Slightly Worse	+3%
Female Life Expectancy	The same	-0.3%
P1 childhood obesity	Slightly Worse	+6%
Teenage Birth Rate	Worse	+13%

* The ABC Vs LGD comparison relates to average rate (eg ABC suicide rate is 2% below the NI average). Also see paragraph 4.2 for further detail.

- 4.3** It is evident from the 26 health indicators contained in Table 2 above, that for the most part, the levels of health enjoyed in ACBCBC are equal to or slightly better than the NI average with respiratory health issues being notably better. Circulatory problems (such as heart disease), self-harm admission rates, cancer and P1 obesity levels are slightly worse than the regional average. However, the main health issues highlighted as worse than the NI average are teenage birth rates.
- 4.4** The fact that ACBCBC is slightly healthier than the NI average is also evident in Table 3 below which shows the death by cause in 2014 for Northern Ireland and ACBCBC. The percentage of deaths caused by circulatory diseases is higher in ACBCBC when compared with the Northern Ireland total for 2014. This also correlates with the findings in Table 2 above relating to the levels of health enjoyed in the district compared to NI and further reinforces the importance of supporting any initiative that can help to address this situation.

Table 3: Deaths by Cause 2014 (ACBCBC Vs NI)

LGD 2014	Deaths in 2014	Deaths due to malignant Neoplasms (%)	Deaths due to Circulatory Diseases (%)	Deaths due to Respiratory Diseases (%)	Deaths due to external causes (%)	Deaths from suicide and undetermined (%)
NI	14,678	29.45	25.34	13.65	4.78	1.83
ACBCBC	1,473	30.00	26.75	11.43	5.09	1.77

Source: NISRA

- 4.5** The issues identified by these statistics and figures can, in part, be addressed by the availability of open space, recreation facilities and sustainable travel initiatives to encourage exercise and active travel. The planning system can help to safeguard and promote health and well-being which is discussed later in this paper. The issue of access to services to ensure that those who reside in the Council area have the appropriate level of care available is discussed in the following section.
- 4.6** Consultation has been carried out with the Southern Health and Social Care Trust (SHSCT) to ascertain the level of existing provision which currently exists in the Council Area.
- 4.7** The Southern Health and Social Care Trust (SHSCT) owns and leases a large number of sites within the District and these are used for a variety of purposes including a hospital, a residential home, a social education centre and health clinics.

Details of all SHSCT properties are contained in Appendix 5 (Southern Trust Estates Portfolio) which includes properties within ACBCBC.

4.8 The following sections highlight the level of varying categories of existing health care across the District.

Hospitals

4.9 There are currently 4 hospitals in ACBCBC. Armagh Community Hospital only provides service for outpatients. The location of these hospitals and the services provided at each are laid out in Table 4 below:

Table 4: ACBCBC Hospital Services

LOCATIONS / NAME OF HOSPITAL	SERVICES PROVIDED	ACCIDENT AND EMERGENCY CARE PROVIDED
Craigavon Area Hospital	<ul style="list-style-type: none"> • General Surgery • Urology • General Medicine • Geriatric Acute • Stroke • Dermatology • Haematology • Cardiology • Obstetrics • Gynaecology • Paediatrics/paediatric surgery/Paediatric Urology/Paediatric • ENT • Intensive Care • Special Care Babies • Trauma • Orthopaedics 	YES
Lurgan Hospital	<ul style="list-style-type: none"> • Non acute services for the elderly • Stroke rehabilitation unit • X ray facility • Mammogram screening 	NO
Armagh Community Hospital	<ul style="list-style-type: none"> • Minor Injuries Unit • Mental health services • Radiology 	NO

	<ul style="list-style-type: none"> • Outpatient services: <ul style="list-style-type: none"> ➤ Speech and language therapy ➤ Podiatry ➤ Physiotherapy ➤ Orthoptics ➤ Audiology 	
St Lukes Hospital, Armagh	<ul style="list-style-type: none"> • Psychiatric Intensive care Unit • Addiction Unit • Long stay accommodation for mental health patients • Assessment and treatment unit for adults with a learning disability • Care for people with dementia • Elderly assessment clinic 	NO

4.10 As shown in Table 4 above, acute medical care is only available at Craigavon Area Hospital. The Minor Injuries Department in Armagh Community Hospital closed in November 2014.

Journey Time to A&E

4.11 In 2004, NISRA published data showing that the average journey time within the three Legacy Council areas of ACBCBC to A&E services. Table 5 below contains these travel times for main hospital A&E services and A&E hospital with minor injury units only. As you would expect, the urban Council area of Craigavon had the lowest average travel time of 9 minutes for both levels of service. Banbridge was the next closest council area with an average travel time of 18 minutes for both levels of service. Armagh legacy Council area had the highest average travel time of 23 minutes for main hospital A&E services whilst the travel time recorded for minor injury units was 11 minutes. Accident & Emergency is mainly served within ACBCBC by the Craigavon Area Hospital (acute hospital) as detailed in Table 4 above. However, it should be noted that in 2004, Armagh minor A&E services would have been provided at Armagh Community Hospital (Tower Hill) but this service has now ceased and patients are now required to travel to Craigavon. This would obviously increase the travel time for this A&E service (minor injury unit). It is also worth highlighting that there are peripheral areas of the Borough (such as Maghera,

Derrynoose, Middletown, Mountnorris, Moneyslane and Derrymore) which are likely to have significantly higher travel times than the district average.

Table 5: Travel Time to Nearest Accident & Emergency Department (LGDs 2004)

LGD	Time to nearest Hospital with A&E excluding Minor Injury Units (average mins)	Time to nearest Hospital with A&E including Minor Injury Units (average mins)
Antrim	10	10
Ards	16	10
Armagh	23	11
Ballymena	19	19
Ballymoney	21	20
Banbridge	18	18
Belfast	5	5
Carrickfergus	13	13
Castlereagh	8	8
Coleraine	9	9
Cookstown	19	17
Craigavon	9	9
Derry	9	9
Down	15	15
Dungannon	30	13
Fermanagh	18	18
Larne	30	30
Limavady	24	24
Lisburn	9	9
Magherafelt	11	11
Moyle	32	13
Newry and Mourne	15	15
Newtownabbey	8	8
North Down	15	6
Omagh	11	11
Strabane	27	27

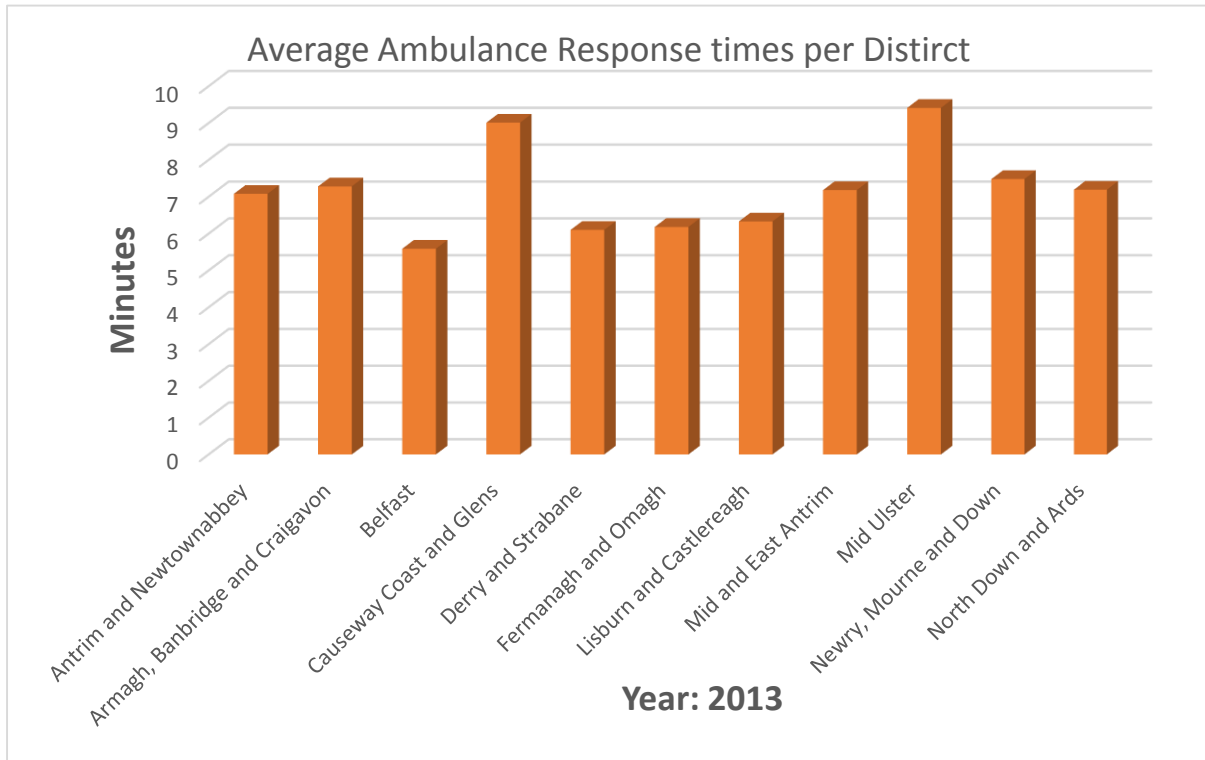
Source: NISRA

Ambulance Response time

4.12 Data published by NISRA also shows that ambulance response times in ACBCBC are the 9th highest of all Council Areas in Northern Ireland. In 2013, the average response time in the Borough was 7 minutes 28 seconds, which is slightly higher than the Northern Ireland average of 7 minutes and 16 seconds. As with journey times to A&E it is also important to note that for more rural parts of the district these

times are likely be even higher. The figures regarding journey times and response times are laid out in the diagram below.³

Diagram 1: NI LGD Ambulance Response Times (2013)



Source: NISRA (<http://www.ninis2.nisra.gov.uk/public/PivotGrid.aspx?ds=7140&lh=73&yn=2009-2013&sk=134&sn=Health%20and%20Social%20Care&yearfilter=>)

Doctors (GP) Surgeries

4.13 There are 156 General Practitioners (GPs) operating in the ACBCBC Hubs (42 in Armagh, 28 in Portadown, 50 in Lurgan & 36 in Banbridge). A list of practices operating in the Borough is contained in Appendix 2.

Care for Elderly / Vulnerable

4.14 Consultation with the health trusts as well as inspection of data held by the Royal and Quality Improvement Authority (RQIA) has shown that there are a number of additional facilities available for care for the elderly and other vulnerable groups such as those with learning difficulties. The majority of these facilities are run privately, independent of the health trusts but are answerable to the RQIA in terms of the level and quality of care provided.

³<http://www.ninis2.nisra.gov.uk/public/Theme.aspx?themeNumber=134>

4.15 There are 5 Statutory Day Care Facilities, 2 statutory and 15 Independent sector residential Care Homes and 9 Domiciliary Care providers in ACBCBC. There are also 6 Special Education Centres for Physical and Learning Disabilities and 6 centres providing services for children. Details of each of these are contained in Appendix 5 (Southern Trust Estates Portfolio) which includes properties within ACBCBC.

5.0 Proposals in ACBCBC (Health)

5.1 The SHSCT currently has plans to develop three of its sites (Lurgan, Armagh & Craigavon). Two of these are in Lurgan and Armagh, where there are future plans to build Community Treatment and Care Centres, a development which is indicative of the promotion of “care in the community”, in line with the Transforming Your Care initiative which is discussed later in the paper. These are likely to be major developments. A similar development was recently completed in Portadown by the SHSCT at a cost of £16.5 million and in Banbridge at a cost of £15m. No indication has been provided by the Trust as to where the exact siting for the development will be located. The concept of integrated care provision hubs (which have been developed in other Council areas) is also something that is recognised as being an important direction for health and hospital provision.

5.2 Additionally, work commenced at the end of February 2016 to construct a new Paediatric unit at Craigavon Area Hospital at a cost of £6.9 million. This building will help modernise and centralise services for children and young people and it is anticipated that it will be completed early next year.

6.0 Role of Planning in Promoting Health and Well-Being

- 6.1** The LDP can protect and safeguard land where there are firm commitments for expansion or new health care facilities.
- 6.2** Whilst health provision is not the responsibility of the Council, Armagh City, Banbridge and Craigavon Borough Council has a role to play in terms of health and well-being and the promotion of lifestyle programmes including linkages to the Leisure Centres within the Borough.

THE Local Development Plan (LDP) process

- 6.3** The SPPS indicates that the LDP must provide for new as well as protect existing areas of open space. As such, people are afforded more opportunity to exercise, play sport and interact with other members of the community. This will provide direct health benefits in so far as they can help bring about a decline in obesity, circulatory diseases and other related illnesses, as well as providing environmental and social benefits. Professor Sir Michael Marmot, in a review into reducing health inequalities in England, included as one of his recommendations that in order to create healthy and sustainable communities, it was necessary to improve the availability of good quality open and green spaces across the social gradient.⁴
- 6.4** The promotion of Active Travel is another way in which the planning authority can influence the health of its residents which was examined in Position Paper 5: Transportation. In a consultation response to DRD's revised Regional Transportation Strategy (RTS), the Public Health Agency advised that the single most important aspect of transportation is the need to promote Active Travel. Reference to the 'Foresight Tackling Obesity Report (2007)' which stated that one of the top 5 policy measures having the greatest impact on levels of obesity was increasing the "walkability / cycleability of the built environment⁵." Similarly, Professor Marmot's report states that the creation of healthy communities is dependent on "improving active travel across the social gradient."⁶
- 6.5** The LDP can also impact on wellbeing by ensuring that there is an adequate supply of housing land so that good quality affordable housing is available to the population. Availability of good quality housing is essential for both physical and mental wellbeing as well as providing social benefits. It is also recognised that high quality residential developments with access to open space is important for mental health and wellbeing and also in terms of community safety.

⁴ Fair Society, Healthy Lives, Professor Sir Michael Marmot, 2010, p.24

⁵ Consultation Response from Public Health Agency to DRD's revised RTS, June 2011, p. 3

⁶ Fair Society, Healthy Lives, Professor Sir Michael Marmot, 2010, p.24

Decision Taking

- 6.6** As well as promoting active travel and encouraging the provision of open space, there are more obvious ways in which the Council, through planning decision making can safeguard public health and these include, but are not limited to,
- Not permitting development which would lead to unacceptable levels of noise pollution or air pollution, both of which have obvious impacts on public health.
 - Not permitting development which would increase flood risk and put the lives of residents at risk.
- 6.7** In all of these aspects, consultation will be carried out with relevant authorities to gauge the potential levels of health impact involved.
- 6.8** The promotion of active travel, the provision of open space and consideration of the impacts on public health, when making planning decisions are considered by the Strategic Planning Policy Statement for NI (SPPS) and the current suite of Planning Policy Statement (PPS's).
- 6.9** This will be in keeping with guidance from DHSSPS who have produced a document which lays out ways in which various statutory agencies and other stakeholder groups can act as delivery partners to promote health and wellbeing in children and young people. One of their recommendations is that DOE, DRD, DCAL, NIHE and District Councils all act together to review planning policies so that they take account of the impact on health, and opportunities for sustainable physical activity.⁷
- 6.10** As part of the LDP process, consideration of a range of issues, including health & well-being, will be taken into account to ensure the policies contribute positively to health & well-being.

7.0 Transforming Your Care – Changing the Health System in NI

- 7.1** Transforming Your Care (TYC) is an initiative aimed at improving the health care system in Northern Ireland. It derives from a report written in 2011 by a group of experts, chaired by John Compton and commissioned by the Minister for Health at the time, Edwin Poots.
- 7.2** The review found that there was a need to reshape the health care system because of a number of factors such as an increasing and ageing population, a rise in poor health / chronic conditions and economic uncertainty. It advised that if services continue to be provided as they currently are, then the existing model will become unsustainable.
- 7.3** Some of the most notable aims of TYC are:
- Focus on disease prevention and tackling health inequalities to reduce dependence on the health care system

⁷ "A fitter Future For All – Framework for Preventing and Addressing Overweight and Obesity in Northern Ireland 2012-2022", DHSSPS, 2012, P. 74

- Care should be provided in the community or in people's homes where practical.
- More services such as X-RAY and diagnostic services should be available in local facilities such as GP surgeries.
- Care for the elderly should increasingly be provided at home instead of in institutional settings.
- Population based approach where cooperation between health trusts is used to encourage a more Northern Ireland wide approach to the provision of health care.
- Integrated Care – care provided by different parts of the health system should be integrated where possible. This may involve teams of multidisciplinary health professionals (GP, dietician, occupational therapist, physio etc.) operating in a community
- Focus on sustainability of services provided – use of locum or agency staff to provide a service is not encouraged.
- Realising value for money.

7.4 This results in a health system focused on the individual becoming healthier, better educated and making better decisions. If care is needed it should primarily be provided by local services such as nurses, health visitors, GP's, pharmacy, social care or an outpatients clinic. Major acute care and specialist care will be provided at major sites such as acute hospitals. The following Diagram sums up what the proposed health system will look like under TYC.

Diagram 2: Health System Under Transforming Your care (TYC)



Source: Transforming Your Care – A Review of Health and Social Care in Northern Ireland: December 2011

Implications of TYC for ACBCBC and the Planning System

- 7.5** The implementation of TYC is ultimately designed to bring about an improved and more efficient health service. The SHSCT’s proposals for the future development of primary and community care infrastructure is in keeping with the strategic direction provided by the TYC health service delivery reform agenda. This involves focusing the development of integrated care networks built around GP practices linking to Community Treatment Centres and Care Centres (CTCCs).
- 7.6** A key aim of TYC is to encourage vulnerable people such as elderly and disabled people to receive more care at home in order to take the strain of existing health facilities. In order for such patients to feel more comfortable at home, they are likely to need to make alterations and additions to their homes. This may result in an increase in planning applications / Certificate of Lawful Use or Development

applications for minor development such as extensions for things like additional downstairs bedrooms / shower rooms etc.

- 7.7** With specific reference to elderly people, TYC aims to significantly reduce the amount of care being provided in institutions such as residential and nursing homes and for more elderly people to live and be cared for in their own home. In order for this to be possible, the elderly will need access to:
- i. Good quality housing (in addition to existing urban dwellers, many elderly rural dwellers seek to move to urban areas in their later years).
 - ii. The ability to “get out and about” in their community
 - iii. The ability to keep active and healthy
 - iv. Safe and attractive neighbourhoods

These are all things which the planning system can help to bring about, as has been discussed in earlier parts of this paper.

- 7.8** There will be a greater need for protection of existing and provision of new, areas of open space in order to encourage health among the general public and decrease dependence on the health system.
- 7.9** There will be a greater use of and need for community facilities to be used for initiatives such as smoking cessation classes, screening, healthy eating classes, family support and exercise classes.
- 7.10** In order to enable more services to be provided in the community, new facilities may need to be developed to provide this. TYC states that:

*New facilities will need to be developed to support this model, which may be similar to the health and care centres currently available in some areas.*⁸

This is already evident in ACBCBC, where the SHSCT have plans for new Community Treatment and Care Centres (CTCC) in Lurgan and Armagh. This proposal is part of an initiative aimed at increasing the number of these centres in the Trust area to 5 in total.

⁸ Transforming Your Care, A review of Health and Social Care in northern Ireland, December 2011 p. 45

8.0 Education - Existing Provision in ACBCBC

8.1 Within the Borough, the Southern region of the Education Authority (EA) is responsible for the provision of Primary and Secondary education. An Area Plan has been produced for the region in conjunction with the Council for Catholic Maintained Schools (CCMS). This Education Area Plan provides a good indicator as to the current and future level of education provision within the district.

Education (Primary)

The distribution of all primary schools in ACBCBC are illustrated on the Map in Appendix 1(b) and detailed in a table in Appendix 6.

The Armagh City and District

8.2 In the former Armagh City and District, as of October 2013, primary education was provided by 39 schools catering for 5,884 pupils across 3 sectors; 20 controlled schools (2,827 pupils), 18 maintained schools (2,865 pupils) and 1 integrated school (192 pupils)⁹. The names of these schools are laid out in the table in Appendix 6 and their locations are shown on the maps in Appendices 1(a) & 1(b).

8.3 From these 39, as per 2014, 8 schools were “oversubscribed” These were Clare PS, Orchard County PS, Annaghmore; The Armstrong PS, Armagh; Our Lady’s and St Mochua’s, Derrynoose; St Jarlath’s PS, Blackwatertown; St Joseph and St James’ PS, Poyntzpass; St Malachy’s PS, Armagh; and St Mary’s PS, Granemore. In total, there are approximately 1,668 unfilled / surplus places across primary schools in the Armagh Area.¹⁰

8.4 The Education Area Plan estimates that by the year 2025, the number of primary pupils in the former Armagh City and District LGD will rise by approximately 386 to around 6632. With an approved enrolment in 2025 of 7401 pupils this increase will mean that there is still adequate primary school provision in this area.¹¹

8.5 The increased pupil numbers and the resultant level of available pupil spaces is broken down per sector in the following Table 6:

Table 6: Legacy ACDC Primary School Provision

Year	Controlled Schools			Maintained Schools			Integrated Schools		
	Pupil Numbers	Approved Enrolment	Surplus Places	Pupil Numbers	Approved Enrolment	Surplus Places	Pupil Numbers	Approved Enrolment	Surplus Places
2013	2827	3631	888	2865	3500	702	192	270	78
2025	3188	3631	443	3215	3500	285	229	270	41

⁹ Area Plan for Primary Provision, Southern Education and Library Board (SELB) in conjunction with CCMS, June 2014, P. 43

¹⁰ Area Plan for Primary Provision, Southern Education and Library Board in conjunction with CCMS, June 2014, P. 47-48

¹¹ As above

8.6 As can be seen from Table 6 above, there is adequate provision for primary school spaces in all sectors in the Armagh City and District Area up until 2025 and probably, until the end of the plan period.

Banbridge

8.7 In the former Banbridge District, as of October 2013, primary education was provided by 23 schools catering for 4,823 pupils in 3 sectors; 10 maintained schools (1,368 pupils), 12 controlled schools (3,045 pupils) and 1 integrated school (410 pupils).¹²The names of these schools are laid out in the table in Appendix 6 and their locations are shown on the maps in Appendices 1(a) & 1(b).

8.8 From these 23 schools, as per 2014, 7 are “oversubscribed” and are identified in Table 7 below;

Table 7: Legacy BDC Primary Schools Over-subscribed

SCHOOL	13/14 ENROLMENT	APPROVED ENROLMENT	SURPLUS PLACES
Dromore Central PS	704	710	0
Drumadonnell PS, Moneyslane	222	203	-19
Fair Hill PS, Dromore	291	290	-1
Moyallon PS, Moyallan, Portadown	206	204	-2
St Colman’s PS, Annaclone	147	134	-13
St Francis PS, Aghaderg	156	145	-11
Bridge Integrated PS, Banbridge	410	406	-4

8.9 The Education Area Plan estimates that by the year 2025, the number of primary pupils in the former Banbridge LGD will increase marginally by 33 to around 4,856. With enrolment staying the same at 5,536, there will still be adequate provision in 2025.

8.10 Pupil numbers and the resultant level of available pupil spaces is broken down per sector in Table 8 below:

¹² Area Plan for Primary Provision, Southern Education and Library Board in conjunction with CCMS, June 2014, P. 65

Table 8: Legacy BDC Primary School Provision

	Controlled Schools			Maintained Schools			Integrated Schools		
Year	Pupil Numbers	Approved Enrolment	Surplus Places	Pupil Numbers	Approved Enrolment	Surplus Places	Pupil Numbers	Approved Enrolment	Surplus Places
2013	3,045	3,388	359	1,368	1,742	398	410	406	0
2025	3,144	3,388	244	1,289	1,742	453	423	406	0

8.11 As can be seen from Table 8 above, there is adequate provision across the Controlled and maintained sectors. The integrated sector will have no surplus places and additional places may be needed before the end of the Plan period in 2030.

Craigavon

8.12 In the former Craigavon Borough Council Area, in 2014, primary education was provided by 32 schools catering for 8,941 pupils across 3 sectors; 13 maintained primary schools (3,895), 18 controlled primary schools (4829 pupils), and 1 Integrated school (217 pupils).¹³The names of these schools are laid out in the table in Appendix 6 and their locations are shown on the maps in Appendices 1(a) & 1(b).

8.13 From these 32 schools, as per 2014, 7 are “oversubscribed” and are identified in Table 9 below:

Table 9: Legacy CBC Primary School Over-subscribed

SCHOOL	13/14 ENROLMENT	APPROVED ENROLMENT	SURPLUS PLACES
Bocombra PS	313	300	-13
Waringstown PS	396	389	-7
Seagoe PS	291	249	-41
St Francis PS, Lurgan	762	741	-21
St Marys PS, Derrymore	147	145	-2

¹³Putting Pupils First; Shaping Our Future, Primary Area Plan, SELB in conjunction with the Council for Catholic Maintained Schools, the Northern Ireland Council for Integrated Education and Comhairle na Gaelscolaíochta.

St Patricks PS, Magheralin	141	129	-12
Portadown Integrated PS	217	203	-14

8.14 The Education Area Plan estimates that by the year 2025, the number of primary pupils in the former Craigavon LGD will have risen by approx. 1158 to around 10,712.¹⁴ With an approved enrolment of 10,812¹⁵ this means that there is no need for additional primary school spaces in the Craigavon Area.

8.15 The increased pupil numbers and the resultant level of available pupil spaces is broken down per sector in Table 10 below:

Table 10: Legacy CBC Primary School Provision

Year	Controlled Schools			Maintained Schools			Integrated Schools		
	Pupil Numbers	Approved Enrolment	Surplus Places	Pupil Numbers	Approved Enrolment	Surplus Places	Pupil Numbers	Approved Enrolment	Surplus Places
2013	4,829	5,882	1,115	3,895	4,727	867	217	203	0
2025	5,659	5,882	223	4,794	4,727	0	259	203	0

8.16 As can be seen from Table 10 above, there is adequate provision for primary school spaces in both the controlled sectors in the Craigavon Area up until 2025 and probably beyond, until the end of the plan period whilst this is not the case for the Integrated Sector. Within Maintained and Integrated primary schools, there appears to be a small deficit of projected spaces required versus approved enrolment.

Dungannon

8.17 There is currently one primary school within the area that transferred at RPA from the legacy Dungannon Borough Council Area to ACBCBC (ie that area east of the Blackwater River within County Armagh containing the three villages of Clonmore, Derrylee & Tamnamore). This is Clintyclay Primary School (CCMS) at Clonmore. Tamnamore Primary School closed in 2008 when it amalgamated with Killyman PS. It now operates as Tamnamore Learning Centre.

Education (Post Primary)

¹⁴Putting Pupils First; Shaping Our Future, Primary Area Plan, SELB in conjunction with the Council for Catholic Maintained Schools, the Northern Ireland Council for Integrated Education and Comhairle na Gaelscolaíochta,

¹⁵ As above, P. 71

8.18 All post primary schools in ACBCBC are listed in Appendix 6 and illustrated on the Map in Appendix 1(a).

Armagh

8.19 Secondary education in the former Armagh LGD is provided at 8 sites; 4 maintained schools (3,148 pupils) and 4 controlled schools (1,727 pupils).

8.20 Of these 8 schools 5 could be classed as “oversubscribed” and one (St Brigid’s, Armagh) has been approved for closure. These are identified in Table 11 below:

Table 11: Legacy ACDC Secondary School Over-subscribed

SCHOOL	2013 ENROLMENT	APPROVED ENROLMENT	SURPLUS PLACES
Markethill High	488	465	-23
The Royal School, Armagh	712	650	-62
St Catherines College	1182	1029	-153
St Patricks High School, Keady	1020	1000	-20
St Patrick’s Grammar	804	750	-54

8.21 According to the regional Area Plan, by 2025, the number of secondary pupils will have risen to around 5,813. This increase in pupil numbers will mean that there will need to be an additional 541 places provided for the area up to 2025 and beyond to the end of the plan period. The pupil numbers and the resultant level of available pupil spaces is broken down in Table 12 below.

Table 12: Legacy ACDC Secondary School Provision

Year	Controlled Secondary and Grammar Schools and Non-Denominational Voluntary Grammar Schools			Maintained Secondary, Catholic Voluntary Grammar Schools & Irish Medium Schools			Grant Maintained Integrated Schools and Controlled Integrated Schools		
	Pupil Numbers	Capacity	Unfilled places	Pupil Numbers	Capacity	Unfilled Places	Pupil Numbers	Capacity	Unfilled Places
2013	1727	2085	443*	3196	3229	260	-	-	-
2025	2043	2085	42	3770	3229	-541	-	-	-

Banbridge

- 8.22** Secondary education in the Banbridge Area is provided at 6 sites; 4 Controlled Schools (3148 pupils), one Maintained School (283 pupils) and 1 Integrated School (569 pupils) as detailed in Table 13 below. A list of schools are contained in the table in Appendix 6 and their locations illustrated on the map in Appendix 1(a).
- 8.23** Of these 6 schools, 3 could be classed as “oversubscribed” and are identified in Table 14 below:

Table 13: Legacy BDC Secondary School Provision

	Controlled Secondary and Grammar Schools and Non-Denominational Voluntary Grammar Schools			Maintained Secondary, Catholic Voluntary Grammar Schools & Irish Medium Schools			Grant Maintained Integrated Schools and Controlled Integrated Schools		
Year	Pupil Numbers	Capacity	Unfilled Places	Pupil Numbers	Capacity	Unfilled Places	Pupil Numbers	Capacity	Unfilled Places
2013	3,148	3,180	109*	287	570	283	569	500	0*
2025	3,620	3,180	-440	445	570	125	619	500	-119

- 8.24** According to the regional Education Area Plan, by 2025, the number of secondary pupils will have risen from 4,004 to around 4,683¹⁶. With an approved enrolment in 2025 of around 4,250, this increase in pupil numbers will mean that there will be approximated 433 more pupils than approved spaces by the year 2025. The increased pupil numbers and the resultant level of available pupil spaces is broken down in Table 13 above.

Table 14: Legacy BDC Secondary School Over-subscribed

SCHOOL	13/14 ENROLMENT	APPROVED ENROLMENT	SURPLUS PLACES
Dromore High School	920	850	-70
Banbridge Academy	1327	1320	-7
New-Bridge Int College	569	500	-69

*figures adjusted to remove oversubscribed places in 3 post primary schools

Craigavon

- 8.25** In 2013/14 Secondary education in the Craigavon Area catered for 6659 pupils at 12 sites; 6 Controlled / Non Denomination Grammar Sector, 5 Maintained / Denominational Grammar Sector and one Integrated school. Since these figures were released 3 schools in the maintained sector have been amalgamated to form a new school St Ronan's in Lurgan. These are St Mary's Junior High School, St Pauls Junior High School and St Michael's Grammar school.
- 8.26** Of the remaining 9 schools (excluding St Mary's, St Paul's and St Michael's), 3 could be classed as "slightly oversubscribed" as detailed in Table 15 below;¹⁷

Table 15: Legacy CBC Secondary School Over-subscribed

SCHOOL	ENROLMENT (as per Oct 13)	APPROVED ENROLMENT	SURPLUS PLACES
Craigavon Senior High	666	620	-46
Lurgan College	451	440	-11
Portadown College	798	780	-18

- 8.27** According to the regional Area Plan, post primary pupil numbers will have risen to approximately 8,550 by the year 2025. With an approved enrolment in 2025 of approximately 8,250 this increase in figures means that there will be more pupils than approved pupil spaces.
- 8.28** The increased pupil numbers and the resultant level of available pupil spaces is broken down in Table 16 below:

Table 16: Legacy CBC Secondary School Provision

Year	Controlled Secondary and Grammar Schools and Non-Denominational Voluntary Grammar Schools			Maintained Secondary, Denominational Voluntary Grammar Schools & Irish Medium Schools			Grant Maintained Integrated Schools and Controlled Integrated Schools		
	Pupil Numbers	Capacity	Unfilled Places	Pupil Numbers	Capacity	Unfilled Places	Pupil Numbers	Capacity	Unfilled Places
2013	3,522	3,930	483*	2,806	3,870	1,076*	331	450	119
2025	4,379	3,930	-449	3,682	3,870	188	488	450	-38

* figures adjusted to remove oversubscribed places in post primary schools

8.29 Table 16 above shows that in relation to secondary education capacity, by 2025, the level of demand will exceed the approved enrolment in the Craigavon Area.

Dungannon

8.30 There are no post primary schools within the area transferred at RPA from the legacy Dungannon Borough Council Area to ACBCBC (ie that area east of the Blackwater River within County Armagh containing the three villages of Clonmore, Derrylee & Tamnamore).

Further/Higher Education

8.31 Further education provision exists in all of the main hubs within ACBCBC provided by the Southern Regional College (SRC). There are campuses in Armagh, Banbridge, Portadown and Lurgan.

8.32 Consultation directly with the Southern Regional College has revealed that they have plans to undertake 3 new build projects over the next 5 years at

- Armagh (on existing site)
- Banbridge (on existing site) and
- Craigavon (at south lake, consolidating existing provision at the Lurgan and Portadown campuses)

8.33 The College has vacant properties in Armagh and Banbridge and decisions will be made on these over the next 12 months.

8.34 Expenditure on maintaining the existing buildings in Armagh, Banbridge, Lurgan and Portadown will continue until the new builds are completed.

8.35 The Southern Regional College has confirmed there are currently no other plans for improvement or expansions with the exception of decant arrangements in Armagh to facilitate the development of the existing site at College Hill/Lonsdale Road.

9.0 Education Proposals in ACBCBC

9.1 Consultation with the Education Authority – Southern Region has highlighted that there are a number of future proposals which will impact upon the provision of education within the controlled sector in the Borough. However, information was not available for school improvements and minor capital works as a draft programme for these is currently being drawn up and is unlikely to be confirmed until April/May 2016.

Surplus Facilities

9.2 There is one school site in the Council area which is surplus to requirements and which will be disposed of in 2016/17; this is the former Keady Primary School which closed in 2012. St. James Primary School in Tandragee has also closed and the site has been cleared.

New Building Projects

9.3 In 2015, the Minister of Education announced a new school build for Iveagh Primary School in Banbridge. This project is currently at economic appraisal stage.

School Improvements

9.4 The School Enhancement Programme (SEP) makes a fund of up to £4million available for the improvement and alteration of various school buildings. There are currently four SEP schemes in the approved for the Borough, however it is not anticipated that any of the schemes will require any additional land or lead to the disposal of any land. The four schemes are:

- Millington Primary School, Portadown
- Armstrong Primary School, Armagh
- Ceara School (Special), Lurgan
- Donard School (Special), Banbridge

10.0 Library Provision in ACBCBC

10.1 Libraries NI is the body with overall responsibility for the provision of library services in Northern Ireland. They have advised that within ACBCBC, there are currently 11 library branches in operation. These branches are;

- Armagh City Library, 2 Market Street, Armagh
- Brownlow Library, 2 Brownlow Road, Craigavon
- Irish & Local Studies Library, 39c Abbey Street, Armagh
- Keady Library, 3 Bridge street, Keady
- Lurgan Library, 1 Carnegie Street, Lurgan
- Portadown Library, 24-26 Church Street, Portadown
- Richhill Library, 1 Maynooth Road, Richhill
- Tandragee Library, 84 Market Street, Tandragee
- Banbridge Library, 23 Scarva Road, Banbridge
- Dromore Library, 38 Market Square, Dromore
- Rathfriland Library, 12 John Street, Rathfriland

10.2 The following settlements are served by a mobile library which goes some way to remedying the absence of permanent library facilities:

- Aghalee
- Ballinderry
- Killylea
- Tynan
- Loughall
- Hamiltonsbawn
- Markethill
- Madden
- Milford
- Darkley
- Glenanne
- Mountnorris
- Loughgilly
- Blackwatertown
- Milltown
- Tullysaran
- Carrickaness
- Maghery
- Annaghmore
- Gibson's Hill
- Gilford
- Laurencetown
- Tullylish
- Donacloney
- Kilmore

- Derryhale
- Loughbrickland
- Scarva
- Magheralin
- Waringstown
- Derrytrasna
- Derryadd
- Aghagallon
- Derrymore
- Poyntzpass

10.3 Libraries NI, in its Business Plan 2015-16 has identified the need to relocate Armagh branch library and the Irish and Local Studies Library to a joint facility.

11.0 Community Uses in ACBCBC

Community Venues

- 11.1** The Council currently provides a range of community facilities / venues either via direct ownership or via financial support.
- 11.2** The Education Authority have indicated that they are willing to make land available to councils so that their facilities will be available for community uses. This will be subject to the agreement of the board of governors of the respective school and is in keeping with guidance given to schools by the Department of Education. There are current examples of shared community / recreation centres with local schools at St. Patricks High School, Keady and Markethill High School. This is a means by which the council can increase the level of service provision offered to its population with regard to things like pitches, play parks or Multi Use Games Areas (MUGA's).

Leisure Centres

- 11.3** Each of the hubs in ACBCBC has a leisure centre which is owned by the Council. A summary of the facilities provided is detailed in Table 17 below.

Table 17: ACBCBC Leisure Centre Facilities

FACILITY	CRAIGAVON LEISURE CENTRE	WAVES LEISURE CENTRE LURGAN	CASCADES LEISURE CENTRE PORTADOWN	ORCHARD LEISURE CENTRE ARMAGH CITY	BANBRIDGE LEISURE CENTRE
SWIMMING POOL	✓	✓	✓	✓	✓
SPORTS HALL	✓			✓	✓
FITNESS SUITE	✓	✓	✓	✓	✓
FREE WEIGHTS	✓	✓	✓	✓	✓
SQUASH COURTS	✓		✓		✓
HEALTH SUITE			✓	✓	✓
DANCE / EXERCISE	✓		✓	✓	✓
MEETING ROOM	✓	✓	✓	✓	✓
CHILDREN SOFT PLAY FACILITY		✓	✓	✓	✓
CAFÉ				✓	✓

- 11.4** Additional facilities are also provided at a number of recreation centres at Tandragee, Richhill, Cathedral Road (Armagh City) and Ardmore (Armagh City) and community centres at Dromore, Rathfriland, and Gilford offering a wide range of community and leisure activities throughout the Borough.

Play Parks

- 11.5** There are 88 council provided play parks located across the Borough; 27 in the former Armagh LGD, 26 in Banbridge and 35 in Craigavon. In addition, there are a total of 24 Multi-Use Games Areas (MUGAs). Generally, children's play areas are well spread throughout the District. Many of the more peripheral settlements in the plan area including Maghery, Middletown, Derrynoose, Cladymore, Moneyslane and Donacloney all benefit from Children's play space areas. Many of these play areas, particularly in the villages, are located within existing residential developments. Therefore these areas are convenient and accessible for most sections of society, particularly children and the elderly and benefit from natural neighbourhood surveillance. These outdoor play spaces should be identified in the LDP and a general policy presumption against the loss of open space to competing land uses should be applied in compliance with the SPPS objectives. This matter is discussed in more detail and dealt with in the Position Paper on Open Space, Recreation and Leisure due to be brought to Council in early summer 2016.

Fire & Rescue Stations, Police Stations (PSNI) & British Army Barracks

- 11.6** There are seven Fire & Rescue Stations within ACBCBC Council, six Police Service of Northern Ireland (PSNI) stations and three barracks / centres operated by the British Army. These are detailed in Appendix 4.

12.0 Conclusions

- 12.1** The purpose of this paper has been to provide an overview of the current provision of health care facilities, education provision and the level of provision of other community uses. It has examined how the planning system can endeavour to contribute to the creation of a more healthy community and promote general wellbeing. The provision of health and education facilities within the plan area is primarily the responsibility of a number of government Departments and statutory bodies with the District Council having a role in relation to community uses. In terms of the LDP it is therefore important to recognise that external providers will have their own long term strategies and investment plans subject to budget constraints. It is also important to note that the role of the Community Plan in this context will be an important aspect of considering these matters.
- 12.2** Future proposals identified by the major service providers, where there are firm commitments, will be reflected in the LDP. As a result of new facilities or changes in provision, it is expected that land will become surplus to requirements and will present scope for redevelopment opportunities as and when they become available. These vacated sites could provide development opportunities to be identified in the LDP for alternative uses. In accordance with regional and operational planning policy the plan will seek to locate new developments which maximise efficient use of education, health and community facilities whilst keeping the environmental impact to a minimum.
- 12.3** Community provision could also be provided in new housing developments where the onus is on the developer to provide such a facility. The LDP also needs to have an appropriate policy to allow community uses to be developed in urban areas regardless of zonings.
- 12.4** The LDP can help promote health & well-being through the protection of open space/recreation areas and the Boroughs environmental assets. The Planning system can also ensure the provision of high quality residential developments and avoid high density environs where the risk of crime and anti-social behaviour may be more prevalent. As such, people are afforded more opportunity to exercise, play sport and interact with other members of the community in a safe environment.
- 12.5** The promotion of Active Travel is another way in which the planning authority can influence the health of its residents as set out in in Position Paper 5 Transportation.
- 12.6** Over the Plan period, it is likely that the services in this Position Paper will be kept under review in order to be informed of any changes.
In turn, key elements in any strategy should be to:
- Provide the necessary flexibility to allow for new health, education & community services within settlements as and when the need arises;
 - Protection and identification of land where there are firm proposals for new buildings in the education and health sectors;
 - Identify suitable alternative uses for vacant sites or surplus land;

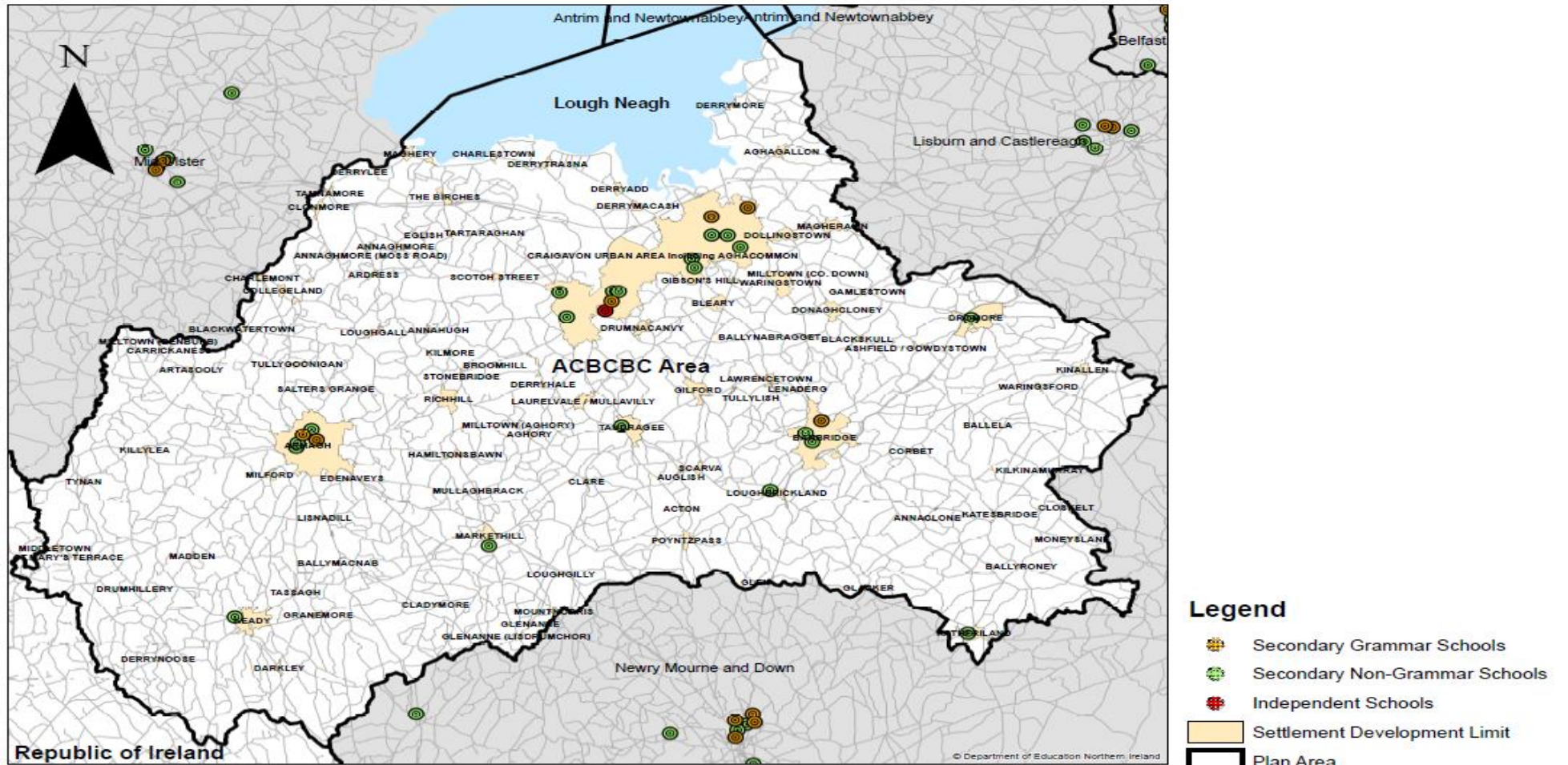
- Allow for provision of community uses on zoned housing land, subject to it not compromising the overall comprehensive development of the land; and
- Inform potential investors of health and education proposals that are likely to occur.

APPENDICES

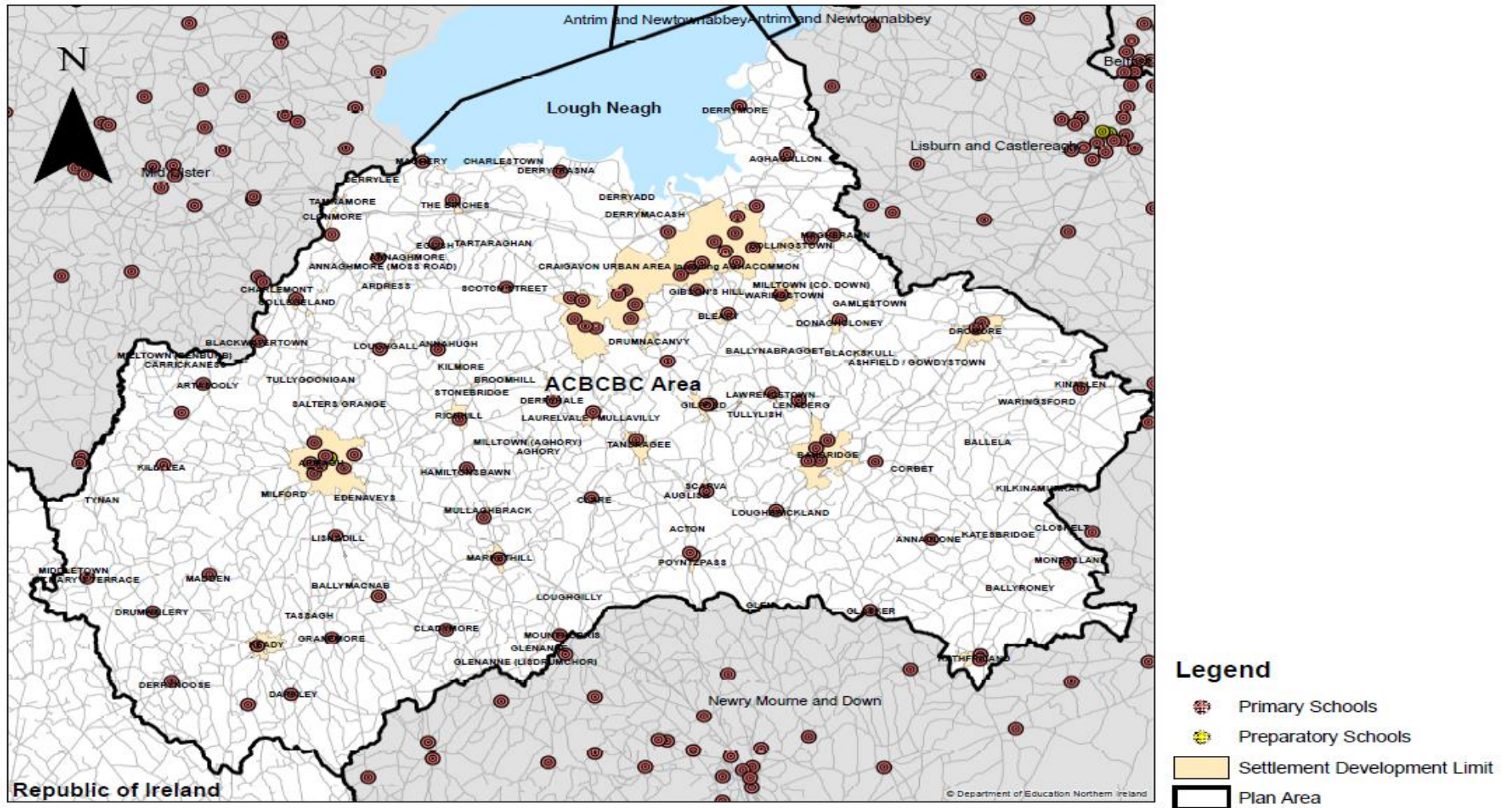
APPENDICES
Appendix 1: ACBCBC School Locations Maps <ul style="list-style-type: none">▪ 1(a): Post-primary▪ 1(b): Primary
Appendix 2: General Practices in ACBCBC
Appendix 3: Further ACBCBC Statistics on Health & Wellbeing
Appendix 4: ACBCBC Fire Stations / Police Stations & British Army Barracks
Appendix 5: Southern Health & Social Care Trust (SH&SCT) Estates Portfolio (March 2015)
Appendix 6: Education Authority (Southern) Schools (September 2015)

APPENDIX 1 – ACBCBC School Location Maps:

APPENDIX 1 (a) – Post-Primary School Locations:



APPENDIX 1 (b) – Primary School Locations:



Appendix 2: General Practices in ACBCBC

1. Dr Beckett and Partners, Armagh
2. Dr Garvin & Partners, Armagh
3. Dr Turtle and Partners, Richhill
4. The Friary Surgery, Armagh
5. Tynan Surgery, Tynan
6. Dr Wright and Partners, Markethill
7. Dr B Watters, Keady
8. Drs Good and Good, Tandragee
9. Dr Connolly and Partners, Banbridge
10. Group Surgery, Banbridge
11. Group Surgery, Banbridge
12. Dr McNeice and partners, Dromore
13. Dr Cupples and Partners, Loughbrickland
14. Drs Murray and Mullan, Loughbrickland
15. Dr Logan and Partners, Gilford
16. Dr Rice and Partners, Lurgan
17. Dr Davidson and partners, Lurgan
18. Dr Wilson and Partners, Lurgan
19. Dr Wilson and Partners, Lurgan
20. Drs Southwell and Zubier, Lurgan
21. Drs gormley and McCloskey, Lurgan
22. Drs Gray and Troughton, Portadown
23. Drs McAuley and Moore, Portadown
24. Drs McAnallen and McAnallen, Portadown
25. Dr Adams and Partners, Portadown
26. Dr McConnell and Partners, Portadown
27. Dr Good and Partners, Portadown
28. Dr Burnett and Partners, Portadown
29. Dr JD Adams, Portadown
30. Brownlow Health Centre, Craigavon
31. Drs hunter and Hunter, Brownlow, Craigavon
32. GP Practice, Donaghcloney

Appendix 3: Further ACBCBC Statistics on Health & Wellbeing

Life Expectancy

- In Armagh City, Banbridge and Craigavon, males born between 2011 and 2013 can expect to live 78.6 years on average. Females can expect to live just over 4 years longer (82.8 years of age).
- These have increased over the decade 2001-2003 to 2011-2013 by 2.7 years for males and 2.1 years for females.
- Healthy life expectancy for males in the Southern Health and Social Care Trust for 2010-2012 was 58.9 years, and for females was 61.6 years. Similar to levels in NI overall.
- Disability-free life expectancy for males in the Southern Health and Social Care Trust for 2010-2012 was 61.1 years, and for females was 61.7 years. Also similar to NI levels.

Avoidable Deaths

- Almost 400 people a year in Armagh City, Banbridge and Craigavon die prematurely of potentially avoidable causes, over half of these aged under 65 years.
- They are disproportionately males (59%) and the main causes are cancers (particularly lung cancer), ischaemic heart disease, unintentional injuries (transport and accidental injury) and suicide.
- Over a quarter of all deaths were from causes considered premature and potentially avoidable.
- The Armagh, Lurgan and Portadown District Electoral Areas had considerably higher potentially avoidable premature death rates for males than the council average. The rates for females generally higher but less so than for males. The differences are the result of particularly high rates for those aged 40-64 years in these areas.

Health Inequalities

- Relatively small or no health inequality gaps were evident between the council and NI across 26 health outcomes examined.
- There are health inequalities within the council area - gaps between the most deprived areas and the council overall, some of these gaps are widening over time (crude suicide rate and standardised admission rate for drugs).

Personal Wellbeing

- From 2012-15 compared with the UK as a whole, adults in Armagh City, Banbridge and Craigavon and Northern Ireland overall were more likely to indicate that they were satisfied with their lives overall; felt that the things they do in life are worthwhile; and rated their happiness yesterday higher. Ratings for anxiety in Armagh City, Banbridge and Craigavon and Northern Ireland were similar to those in the UK.

Sport & Physical Activity

- Almost a quarter (24%) of adults achieved the levels of physical activity recommended by the Chief Medical Officer of participating in moderate intensity activities for at least 30 minutes on at least five days per week. This compares to 35% of adults for NI overall.
- Most physical activity occurred in the home, followed by activities at work. Sport activities came third and activities related to getting about fourth.

Demography

- As with NI as a whole the Borough has both a growing and ageing population.
- In 2014 the population of the Borough was estimated at 205,700. The population is projected to increase by 12% or 24,500 people to 2026 - double the rate of population increase projected for NI as a whole.
- The proportion of those 65 and over is projected to increase from 15% of the total population in 2014 to 18% in 2026 (an extra 10,900 people aged 65 or over).

Appendix 4: ACBCBC Fire Stations / Police Stations & British Army Barracks

ACBCBC Fire & Rescue Stations
1. Armagh City, Loughall Road
2. Banbridge, Victoria Street
3. Dromore, Mossvale Road
4. Keady, Armagh Road
5. Lurgan, Alexandra Crescent
6. Portadown, Thomas Street
7. Rathfriland, Castle Street
ACBCBC PSNI Stations
1. Armagh City, City View
2. Banbridge, Castlewellan Road
3. Brownlow, Legahory Centre, Craigavon
4. Lurgan, Church Place
5. Portadown, Edward Street
6. Portadown, Mahon Road
British Army Barracks / Centres within ACBCBC
1. Armagh City (Field Hospital), Mall East
2. Armagh City (RIR Museum), The Mall
3. Portadown (Reserve Centre), Charles Street

Appendix 5: Southern Health & Social Care Trust (SH&SCT) Estates Portfolio (March 2015)

BLOCK NAME	ADDRESS	TOWN / CITY	POST CODE	FUNCTION	OWNED/ LEASED
4 Legahory Centre	UNIT 4 LEGAHORY CENTRE	CRAIGAVON	BT65 5BE	16+ Plus After care Service	Leased
Inch 3 (Core House)	9, HAWTHORN DRIVE	ARMAGH	BT60 1HA	Accommodation	Owned
Inch 1	69, LISANALLY LANE	ARMAGH	BT61 7HF	Accommodation	SLA
DHH - Main Hospital Block	5 HOSPITAL ROAD	NEWRY	BT35 8DR	Acute Health Care	Owned
South Tyrone Ambulance Depot	3 QUARRY LANE	DUNGANNON	BT70 1HX	Ambulance	Owned
Tower Hill Ambulance Control	62 VICTORIA STREET	ARMAGH	BT81 9DR	Ambulance	Owned
Ballygawley ambulance depot	15 OLD DUNGANNON RD	BALLYGAWLEY	BT70 2EY	Ambulance	Owned by others
CAH - Kitchen/CSSD&Pharmacy - Main Block	68 LURGAN ROAD	PORTADOWN	BT63 5QQ	Kitchen/CSSD&Pharmacy	Owned
DHH - Ambulance Station	5 HOSPITAL ROAD	NEWRY	BT35 8DR	Ambulance Station	Owned
Kilkeel Ambulance Station	GREENCASTLE STREET	KILKEEL	BT34 4BH	Ambulance Station	Owned
Standing Stone	74 LOUGHGALL ROAD	ARMAGH	BT61 7PR	Ancient Monument	Owned
CAH - Basement - Main Block	68 LURGAN ROAD	PORTADOWN	BT63 5QQ	Medical Recs / Plantrooms	Owned
South Tyrone BOC Compound	2 CARLAND ROAD	DUNGANNON	BT71 4AU	BOC Plant	Owned
LH - Boiler House	100 SLOAN STREET	LURGAN	BT66 8NT	Boiler House	Owned
DHH - Boiler House	5 HOSPITAL ROAD	NEWRY	BT35 8DR	Boiler House	Owned
DHH - Ambulance Station Boilerhouse	9 HOSPITAL ROAD	NEWRY	BT35 8DR	Boiler House	Owned
CAH - Admin F/F - Main Block	68 LURGAN ROAD	PORTADOWN	BT63 5QQ	Offices	Owned
CAH - ICU Main Theatres & Plant room	68 LURGAN ROAD	PORTADOWN	BT63 5QQ	Theatres / Plantrooms	Owned
Legahory Centre (Car Parking)	LEGAHORY CENTRE	CRAIGAVON	BT65 5BE	Car parking	Leased
Car park, Church of Ireland	John Street	RATHFRILAND	BT34 5QH	Car Parking	Leased
CAH - Ramone Building	68 LURGAN ROAD	PORTADOWN	BT63 5QQ	Treatment / Offices	Owned

BLOCK NAME	ADDRESS	TOWN / CITY	POST CODE	FUNCTION	OWNED/ LEASED
Orana Childrens & Family Centre	2, Warrenpoint Road	NEWRY	BT34 2PF	Child Care (Sure Start)	Leased
Arke Surestart (Unit 6&7)	ARMAGH SHOPPING CENTRE	ARMAGH	BT61 7AE	Child Care (Sure Start)	Leased
Surestart (Ballysaggart Business Centre)	BEECHVALLEY WAY	DUNGANNON	BT70 1BS	Child Care (Sure Start)	Leased
Surestart Centre	2a/2b NEWRY ROAD	BANBRIDGE	BT32 3HF	Child Care (Sure Start)	Leased
Blossom Surestart	63, PARK ROAD	PORTADOWN	BT62 1DS	Child Care (Sure Start)	Leased
Drumglass Childrens Home	20-26 COALISLAND ROAD	DUNGANNON	BT71 6LA	Childrens home	Owned
Woodside Childrens Home	43b, BALLYNAHONE RD	ARMAGH	BT60 1JD	Childrens home	Owned
Cedar Grove	28 WINDSOR HILL	NEWRY	BT34 1ER	Childrens Home	Owned
St Lukes Roman Catholic Chapel	71 LOUGHGALL ROAD	ARMAGH	BT61 7NQ	Church	Owned
St Lukes Protestant Church	71 LOUGHGALL ROAD	ARMAGH	BT61 7NQ	Church	Owned
St Lukes D.P.Villa 2 CYPC	71 LOUGHGALL ROAD	ARMAGH	BT61 7NQ	Clinic	Owned
Tower Hill Victoria House Comm. Clinic	62 VICTORIA STREET	ARMAGH	BT61 9DR	Clinic / Comm. OT	Owned
Enterprise centre Unit 4	2, COALISLAND ROAD	DUNGANNON	BT71 6JT	CMP	Leased
Lennox House	17-21, MARKET STREET	ARMAGH	BT61 7BX	CMP	Leased
Unit 1-7	WIN Business Park	NEWRY	BT35 6PH	CMP	Leased
Community Stores	MANOR DRIVE	LURGAN	BT66 8QD	Community Services	Leased
Dollingstown Social Centre	ALFRED TERRACE	DOLLINGSTOWN	BT66 7JX	Community Services	Leased
Laurencetown Day Care Centre	DRUMNASCAN ROAD	LAURENCETOWN	BT63 6DU	Community Services	Leased
Longstone Clover Activity Centre	73 LOUGHGALL ROAD	ARMAGH	BT61 7PR	Day Care	Owned
Drumcashel House (Newry SEC)	RATHFRILAND ROAD	NEWRY	BT34 1HU	Day care	Owned
Bungalow	RATHFRILAND ROAD	NEWRY	BT34 1HU	Day care	Owned
Manse View (horticultural centre)	RATHFRILAND ROAD	NEWRY	BT34 1HU	Day Care	Owned
Windsor Day Centre	RATHFRILAND ROAD	NEWRY	BT34 1HU	Day Care	Owned
Longstone Acorn / Stores	73 LOUGHGALL ROAD	ARMAGH	BT61 7PR	Day Care / Stores	Owned
Willowbank Resource Centre	12 CARLAND ROAD	DUNGANNON	BT71 4AA	Day Centre	Owned

BLOCK NAME	ADDRESS	TOWN / CITY	POST CODE	FUNCTION	OWNED/ LEASED
Armagh Resource Centre	12 STATION ROAD	ARMAGH	BT61 7NP	Day Centre	Owned
Appleby Social Education Centre	43 BALLYNAHONEMORE RD	ARMAGH	BT60 1JD	Day Centre	Owned
ARC Horticultural Centre	13 Clogharevan Road	BESSBROOK	BT35 7BH	Day Centre	Leased
Peg's Cottage	GLENCREW ROAD	AUGHNACLOY	BT69 6EX	Day Centre	SLA
Aughnacloy Day Centre (McCreedy's Mill)	CALEDON ROAD	AUGHNACLOY	BT69 6AL	Day Centre	Leased
Coalisland Day Centre, Gortgonis Sports Pavilion	GORTGONIS ROAD	COALISLAND	BT71 4QF	Day Centre	Leased
Clayton Memorial Hall	CHURCH STREET	DROMORE	BT25 1AA	Day Centre	Leased
Copperfields Rehab. Workshop	25 GROVE HILL ROAD	LOUGHBRICKLAND	BT32 3NF	Day Centre	Leased
Crozier Lodge Day Centre	1a MEETING HOUSE ROAD	BANBRIDGE	BT32 3ER	Day Centre	Owned
Ashford Day Centre	15 BANBRIDGE ROAD	DROMORE	BT25 1NB	Day Centre	Owned
Eden SEC	293 BRIDGE ST	PORTADOWN	BT63 5AR	Day Centre	Owned
The Meadows Day Centre	293 BRIDGE ST	PORTADOWN	BT63 5AR	Day Centre	Owned
Manor Centre	26 MANOR DRIVE	LURGAN	BT66 8QD	Day Centre	Owned
Rathkeeland House	Castleblaney Road	CROSSMAGLEN	BT35 9JJ	Day Centre	Leased
Crossmaglen Community Centre	O'Flaich Square	CROSSMAGLEN	BT35 9AA	Day Centre	Leased
Drumalane Site - Orchard	28 DRUMALANE ROAD	NEWRY	BT35 8AP	Day Centre	Owned
Drumalane Site - Laurels	28 DRUMALANE ROAD	NEWRY	BT35 8AP	Day Centre	Owned
Binnlan Lodge	MANSE ROAD	KILKEEL	BT34 4BN	Day Centre	Owned
Edenderry House OPH	18 GILFORD ROAD	PORTADOWN	BT63 5ED	Day Centre / Offices	Owned
LH - Day Hospital	100 SLOAN STREET	LURGAN	BT66 8NT	Day Hospital	Owned
CAH - General Wards - Main Block	68 LURGAN ROAD	PORTADOWN	BT63 5QQ	Wards	Owned
Woodlawn Houses	18-21, WOODLAWN PARK	DUNGANNON	BT70 1AH	DEMOLISHED	
Tower Hill Registration Office	62 VICTORIA STREET	ARMAGH	BT61 9DR	Disused Accom.	Owned
CAH - Maternity - Main Block	68 LURGAN ROAD	PORTADOWN	BT63 5QQ	Wards / Treatment	Owned

BLOCK NAME	ADDRESS	TOWN / CITY	POST CODE	FUNCTION	OWNED/ LEASED
Garage	15 BANBRIDGE ROAD	DROMORE	BT25 1NB	Garage / Storage	Owned
CAH - A&E,MENT,OPD - Main Block	68 LURGAN ROAD	PORTADOWN	BT63 5QQ	Wards / Treatment	Owned
CAH - MAU & Radiology - Main Block	68 LURGAN ROAD	PORTADOWN	BT63 5QQ	Wards / Treatment	Owned
CAH - Boilerhouse	68 LURGAN ROAD	PORTADOWN	BT63 5QQ	Energy centre	Owned
South Tyrone Main Block	2 CARLAND ROAD	DUNGANNON	BT71 4AU	General Hospital	Owned
Tower Hill Armagh Community Hospital	62 VICTORIA STREET	ARMAGH	BT61 9DR	General Hospital	Owned
LH - Main Hospital Block	100 SLOAN STREET	LURGAN	BT66 8NT	General Hospital	Owned
LH - Generator	100 SLOAN STREET	LURGAN	BT66 8NT	Generator	Owned
St Lukes Generator House	71 LOUGHGALL ROAD	ARMAGH	BT61 7NQ	Generator / Switchroom	Owned
South Tyrone Generator House	2 CARLAND ROAD	DUNGANNON	BT71 4AU	Generator / Switchroom	Owned
Tower Hill Generator House	62 VICTORIA STREET	ARMAGH	BT61 9DR	Generator / Switchroom	Owned
CAH - Engineers Office & Store	68 LURGAN ROAD	PORTADOWN	BT63 5QQ	Office & Store	Owned
Generator	58 NEWRY STREET	KILKEEL	BT34 4DP	Generator	Owned
South Tyrone Parkview GP surgery	2 CARLAND ROAD	DUNGANNON	BT71 4AU	GP Practice	Owned
Dr Poots Surgery	58 NEWRY STREET	KILKEEL	BT34 4DP	GP surgery	Owned
Dungannon Health Clinic	38 THOMAS STREET	DUNGANNON	BT70 1HS	H & SSC centre	Owned
LH - Bungalow	100 SLOAN STREET	LURGAN	BT66 8NT	H & SSC Centre	Owned
LH - Lurgan Social Services	100 SLOAN STREET	LURGAN	BT66 8NT	H & SSC Centre	Owned
Brownlow Health Centre	1 LEGAHORY CENTRE	CRAIGAVON	BT65 5BE	H & SSC centre	Owned
Brownlow Sub Offices	5 LEGAHORY CENTRE	CRAIGAVON	BT65 5BE	H & SSC centre	Owned
Portadown Community Treatment & Care Centre	TAVANAGH AVENUE	PORTADOWN	BT62 3BU	H & SSC centre	Owned
Gilford Health Centre	88 CASTLE VIEW	GILFORD	BT63 6JS	H & SSC centre	Owned
Banbridge Community Treatment & Care Centre	OLD HOSPITAL ROAD	BANBRIDGE	BT32 3QX	H & SSC Centre	Owned

BLOCK NAME	ADDRESS	TOWN / CITY	POST CODE	FUNCTION	OWNED/ LEASED
Banbridge Community HC & SSO	17 SCARVA STREET	BANBRIDGE	BT32 3AD	H & SSC centre	Owned
Banbridge Community Clinic	17 SCARVA STREET	BANBRIDGE	BT32 3AD	H & SSC centre	Owned
Dromore Health Clinic	18 BANBRIDGE ROAD	DROMORE	BT25 1NB	H & SSC centre	Owned
Ballygawley Health Centre	14 OLD DUNGANNON RD	BALLYGAWLEY	BT70 2EY	Health Centre	Owned
Markethill Health Centre	31 NEWRY STREET	MARKETHILL	BT60 1TA	Health Centre	Owned
Richhill Health Centre	6-10 MAYNOOTH ROAD	RICHHILL	BT61 9PE	Health Centre	Owned
Armagh Medical Centre	6, DOBBIN STREET LANE	ARMAGH	BT61 7QG	Health Centre	Leased
Aughnacloy Health Centre	2, SIDNEY LANE	AUGHNACLOY	BT69 6AF	Health Centre	Leased
Coalisland Health Centre	10a. LINESIDE	COALISLAND	BT71 4LP	Health Centre	Leased
Moy Health Centre	40, CHARLEMONT STREET	MOY	BT71 7SL	Health Centre	Leased
Tynan Surgery	15, DARTON REE	TYNAN	BT60 4QT	Health Centre	Leased
Tandragee Medical Centre	MONTAGUE STREET	TANDRAGEE	BT62 2AN	Health Centre	Leased
Valley Medical Centre	20, CONEEN ROAD	FIVEMILETOWN	BT75 0ND	Health Centre	Leased
Newry Health Centre	15 JOHN MITCHELL PLACE	NEWRY	BT34 2BU	Health Centre	Owned
Crossmaglen Health Centre	McCORMICK PLACE	CROSSMAGLEN	BT35 9HD	Health Centre	Owned
Kilkeel Primary Care Centre	GREENCASTLE STREET	KILKEEL	BT34 4BH	Health Centre	Owned
Newtownhamilton Health Centre	2a MARKETHILL ROAD	NEWTOWNHAMILTON	BT35 0BE	Health Centre	Owned
Rathfriland HC and Library	JOHN STREET	RATHFRILAND	BT34 5QH	Health Centre	Owned
Warrenpoint HC and Library	SUMMERHILL	WARRENPOINT	BT34 3JD	Health Centre	Owned
Bessbrook Clinic	12 CONVENT HILL	BESSBROOK	BT35 7AW	Health Centre	Owned
Clogher Valley Health & Day Care Clinic	38 AUGHER ROAD	CLOGHER	BT76 0AD	Health Centre / Day centre	Owned
Keady Day Centre	2a ANNVALE ROAD	KEADY	BT60 2RP	Health Centre / Day centre	Owned
Banbridge Polyclinic	11 BALLYGOWAN ROAD	BANBRIDGE	BT32 3QX	Health Clinic	Owned
Oakridge ISU	20-26 COALISLAND ROAD	DUNGANNON	BT71 6LA	Intensive support unit	Owned
LH - Kitchen/Dining	100 SLOAN STREET	LURGAN	BT66 8NT	Kitchen / Dining	Owned

BLOCK NAME	ADDRESS	TOWN / CITY	POST CODE	FUNCTION	OWNED/ LEASED
South Tyrone Kitchen / Dining Room	2 CARLAND ROAD	DUNGANNON	BT71 4AU	Kitchen / Stores	Owned
CAH - Estate Staff Office	68 LURGAN ROAD	PORTADOWN	BT63 5QQ	Office	Owned
CAH - Workshops	68 LURGAN ROAD	PORTADOWN	BT63 5QQ	Workshops	Owned
CAH - Ambulance garages	68 LURGAN ROAD	PORTADOWN	BT63 5QQ	Stores	Owned
South Tyrone Laundry	2 CARLAND ROAD	DUNGANNON	BT71 4AU	Laundry	Owned
CAH - Laundry	68 LURGAN ROAD	PORTADOWN	BT63 5QQ	Laundry	Owned
CAH - Mortuary	68 LURGAN ROAD	PORTADOWN	BT63 5QQ	Mortuary	Owned
St Lukes D.P.Villa 3	71 LOUGHGALL ROAD	ARMAGH	BT61 7NQ	Medical records store	Owned
South Tyrone Medical records	2 CARLAND ROAD	DUNGANNON	BT71 4AU	Medical records store	Owned
CAH - Data Centre	68 LURGAN ROAD	PORTADOWN	BT63 5QQ	Server Room	Owned
St Lukes Mortuary	71 LOUGHGALL ROAD	ARMAGH	BT61 7NQ	Mortuary	Owned
CAH - Laboratory	68 LURGAN ROAD	PORTADOWN	BT63 5QQ	Laboratory	Owned
Mortuary	58 NEWRY STREET	KILKEEL	BT34 4DP	Mortuary	Owned
CAH - Day Surgery	68 LURGAN ROAD	PORTADOWN	BT63 5QQ	Day Surgery	Owned
Southern ITEC	52, Armagh Road	NEWRY	BT35 6DN	Occupational Therapy	Leased
CAH - Recompression Unit	68 LURGAN ROAD	PORTADOWN	BT63 5QQ	Recompression unit	Owned
CAH - Ambulance Control	68 LURGAN ROAD	PORTADOWN	BT63 5QQ	Ambulance control	Owned
Canal House	27-29, Mary Street	NEWRY	BT34 2AA	Offices	Leased
Ballybott House	22 Corn Market	NEWRY	BT35 8BG	Offices	Leased
St Lukes Hill Building	71 LOUGHGALL ROAD	ARMAGH	BT61 7NQ	Offices	Owned
South Tyrone Offices Soc. Workers	2 CARLAND ROAD	DUNGANNON	BT71 4AU	Offices	Owned
South Tyrone Offices Psychology	2 CARLAND ROAD	DUNGANNON	BT71 4AU	Offices	Owned
South Tyrone Hotel Services Portacabin	2 CARLAND ROAD	DUNGANNON	BT71 4AU	Offices	Owned
South Tyrone Coronation Block	2 CARLAND ROAD	DUNGANNON	BT71 4AU	Offices	Owned

BLOCK NAME	ADDRESS	TOWN / CITY	POST CODE	FUNCTION	OWNED/ LEASED
South Tyrone Carland Lodge Respite	2 CARLAND ROAD	DUNGANNON	BT71 4AU	Offices	Owned
South Tyrone Comm O.T. offices	2 CARLAND ROAD	DUNGANNON	BT71 4AU	Offices	Owned
South Tyrone Carland House Resource Ctr.	2 CARLAND ROAD	DUNGANNON	BT71 4AU	Offices	Owned
Longstone Pinewood Villa	73 LOUGHGALL ROAD	ARMAGH	BT61 7PR	Offices	Owned
Longstone Ashleigh House	73 LOUGHGALL ROAD	ARMAGH	BT61 7PR	Offices	Owned
Tower Hill Main Building SHSSB	62 VICTORIA STREET	ARMAGH	BT61 9DR	Offices	Owned
Tower Hill Milford Building SHSSB	62 VICTORIA STREET	ARMAGH	BT61 9DR	Offices	Owned
Tower Hill Grange Building	62 VICTORIA STREET	ARMAGH	BT61 9DR	Offices	Owned
Armagh District Offices	1-2 GOSFORD PLACE	ARMAGH	BT61 9AR	Offices	Owned
Lisanally House	87 LISANALLY LANE	ARMAGH	BT61 7HF	Offices	Owned
St Marks Place Offices	5, St MARK'S PLACE	ARMAGH	BT61 9BH	Offices	Owned
St Marks Place Offices	5a, St MARK'S MEWS	ARMAGH	BT61 9BH	Offices	Owned
CAH - Willowbank	68 LURGAN ROAD	PORTADOWN	BT63 5QQ	Staff Accommodation	Owned
CAH - Maples (Grnd Floor - Occup. Health)	68 LURGAN ROAD	PORTADOWN	BT63 5QQ	Staff Accommodation	Owned
CAH - Cedars (Grnd Floor - CPR Training)	68 LURGAN ROAD	PORTADOWN	BT63 5QQ	Staff Accommodation	Owned
CAH - Rowans	68 LURGAN ROAD	PORTADOWN	BT63 5QQ	Offices	Owned
CAH - Oaks	68 LURGAN ROAD	PORTADOWN	BT63 5QQ	Staff Accommodation	Owned
CAH - The Elms	68 LURGAN ROAD	PORTADOWN	BT63 5QQ	Staff Accommodation	Owned
CAH - Tower Block	68 LURGAN ROAD	PORTADOWN	BT63 5QQ	Offices	Owned
CAH - Electrical Sub-Station	68 LURGAN ROAD	PORTADOWN	BT63 5QQ	Main Electrical Incomer	Owned
CAH - Trust HQ/ College of Nurse	68 LURGAN ROAD	PORTADOWN	BT63 5QQ	Offices	Owned
Riverside Block 2	10 MOYALLAN ROAD	GILFORD	BT63 5JX	Offices	Owned

BLOCK NAME	ADDRESS	TOWN / CITY	POST CODE	FUNCTION	OWNED/ LEASED
Riverside Block 3	10 MOYALLAN ROAD	GILFORD	BT63 5JX	Offices	Owned
Riverside Administration Block	10 MOYALLAN ROAD	GILFORD	BT63 5JX	Offices	Owned
Bannvale House	10 MOYALLAN ROAD	GILFORD	BT63 5JX	Offices	Owned
Russell Drive Offices	9-17 RUSSELL DRIVE	LURGAN	BT66 8HD	Offices	Owned
DHH - Clanrye House/Generator House/Stores	5 HOSPITAL ROAD	NEWRY	BT35 8DR	Offices	Owned
DHH - Ghana House	5 HOSPITAL ROAD	NEWRY	BT35 8DR	Offices	Owned
DHH - Estate Services	5 HOSPITAL ROAD	NEWRY	BT35 8DR	Offices	Owned
DHH - Post Room Portacabin	5 HOSPITAL ROAD	NEWRY	BT35 8DR	Offices	Owned
DHH - Union Offices Portacabin	5 HOSPITAL ROAD	NEWRY	BT35 8DR	Offices	Owned
DHH - Effectiveness & Evaluation Offices	5 HOSPITAL ROAD	NEWRY	BT35 8DR	Offices	Owned
DHH - Meadowview Offices	5 HOSPITAL ROAD	NEWRY	BT35 8DR	Offices	Owned
DHH - Specialist Estate Department Portacabin	6 HOSPITAL ROAD	NEWRY	BT35 8DR	Offices	Owned
Drumalane Site - Drumalane House	28 DRUMALANE ROAD	NEWRY	BT35 8AP	Offices	Owned
Drumalane Site - Ivybrook	28 DRUMALANE ROAD	NEWRY	BT35 8AP	Offices	Owned
Drumalane Site - Oakdale	28 DRUMALANE ROAD	NEWRY	BT35 8AP	Offices	Owned
Needham House	1 KILN STREET	NEWRY	BT35 8EQ	Offices	Owned
St Lukes Hotel Services / Vacant Stores	71 LOUGHGALL ROAD	ARMAGH	BT61 7NQ	Offices	Owned
Riverside Block 1	10 MOYALLAN ROAD	GILFORD	BT63 5JX	Offices / Café	Owned
St Lukes Hosp. Main Building	71 LOUGHGALL ROAD	ARMAGH	BT61 7NQ	Offices and Psych Wards	Owned
CAH - Beechfield House	68 LURGAN ROAD	PORTADOWN	BT63 5QQ	Offices	Owned
CAH - Firbank House	68 LURGAN ROAD	PORTADOWN	BT63 5QQ	Offices	Owned
St Lukes OT Workshop / Laundry / Records Store	71 LOUGHGALL ROAD	ARMAGH	BT61 7NQ	OT and Med Records	Owned

BLOCK NAME	ADDRESS	TOWN / CITY	POST CODE	FUNCTION	OWNED/ LEASED
CAH - Transport Rest	68 LURGAN ROAD	PORTADOWN	BT63 5QQ	Offices	Owned
Bocombra Main Block	2 OLD LURGAN ROAD	PORTADOWN	BT63 5SQ	Paediatric Psychiatric	Owned
Pharmacy	1 LEGAHORY CENTRE	CRAIGAVON	BT65 5BE	Pharmacy (LEASED OUT)	Owned
DHH - Energy Centre	7 HOSPITAL ROAD	NEWRY	BT35 8DR	Plant Room	Owned
Drumalane Site - Plant Room	28 DRUMALANE ROAD	NEWRY	BT35 8AP	Plant Room	Owned
St Lukes Villas Calorifier House	71 LOUGHGALL ROAD	ARMAGH	BT61 7NQ	Plantroom	Owned
South Tyrone Calorifier House	2 CARLAND ROAD	DUNGANNON	BT71 4AU	Plantroom	Owned
Longstone Play Shelter	73 LOUGHGALL ROAD	ARMAGH	BT61 7PR	Play shelter	Owned
CAH - Medical Gas VIE	68 LURGAN ROAD	PORTADOWN	BT63 5QQ	Gas Storage	Owned
DHH - Pschiatric Day Hospital	5 HOSPITAL ROAD	NEWRY	BT35 8DR	Psychiatric Unit	Owned
CAH - Histo-Cytology Laboratory	69 LURGAN ROAD	PORTADOWN	BT63 5QQ	Laboratory	Owned
LH - Chestnut Building	100 SLOAN STREET	LURGAN	BT66 8NT	Records Store	Owned
Archways Centre	MILLVALE ROAD	BESSBROOK	BT35 7EH	Rehab. Centre	Owned
Records Storage	38 THOMAS STREET	DUNGANNON	BT70 1HS	REMOVED	
St Lukes Hollow Drive	71 LOUGHGALL ROAD	ARMAGH	BT61 7NQ	Residential	Owned
Apple Mews	LOWER DESART LANE	ARMAGH	BT61 8AR	Residential	SLA
Granville Manor	GRANVILLE PARK	DUNGANNON	BT70 1JT	Residential	SLA
Bocombra Childrens Centre	2 OLD LURGAN ROAD	PORTADOWN	BT63 5SG	Residential	Owned
Ederville Childrens Home	6 EDENDERRY ROAD	BANBRIDGE	BT32 3AF	Residential	Owned
Cherrygrove Childrens Home	100a, SLOAN STREET	LURGAN	BT66 8NT	Residential	Owned
Crozier House OPH	1 MEETING HOUSE ROAD	BANBRIDGE	BT32 3ER	Residential	Owned
Skeagh House OPH	15 BANBRIDGE ROAD	DROMORE	BT25 1NB	Residential	Owned
Forest Lodge	1 LITTLE FOREST	PORTADOWN	BT63 5DX	Residential	Owned
Cloughreagh House Bessbrook	MILLVALE ROAD	BESSBROOK	BT35 7EH	Residential	Owned
Carrickore	RATHFRILAND ROAD	NEWRY	BT34 1HU	Residential	Owned
Shanlieve House	1-3 RANDALL HEIGHTS	KILKEEL	BT34 4XU	Residential	Owned

BLOCK NAME	ADDRESS	TOWN / CITY	POST CODE	FUNCTION	OWNED/ LEASED
Teach Sona	5 MULLANSTOWN ROAD	MULLAGHBAWN	BT35 9EX	Residential	Owned
Garage	5 MULLANSTOWN ROAD	MULLAGHBAWN	BT35 9EX	Residential	Owned
Halfway House	43a, UNION PLACE	DUNGANNON	BT70 1DL	Residential	Leased
Inch 2 61,63,65&67	LOUGHGALL ROAD	ARMAGH	BT61 7PH	Residential	Leased
Inch 3 (NIHE Bungalows)	5-8, HAWTHORN DRIVE	ARMAGH	BT60 1HA	Residential	Leased
Bowens Manor	2 BOWENS CLOSE	LURGAN	BT66 7WD	Residential	Leased
5 & 8, Lilburn Hall	BELFAST ROAD	LURGAN	BT66 7TL	Residential	Leased
Ardaveen Manor	35 ARDAVEEN PARK	BESSBROOK	BT35 7BX	Residential	Leased
Glanree House	37, Patrick Street	NEWRY	BT35 8EB	Residential	Leased
Aldregrove House	7, Ashgrove Road	NEWRY	BT34 1QN	Residential	Leased
Slieve Roe House OPH / Donard Day Centre	MANSE ROAD	KILKEEL	BT34 4BN	Residential / Day Care	Owned
Roxborough House	2 DUNGANNON ROAD	MOY	BT71 7SN	Residential home	Owned
Vela House	2, DUNGANNON ROAD	MOY	BT71 7SN	Residential home	Owned
Orchard House	12a, RECTORY CLOSE	LOUGHGALL	BT61 8NA	Residential Home	Leased
Moylinn House Main Block	21 LEGAHORY CENTRE	CRAIGAVON	BT65 5BE	Resource Centre	Owned
Moylin House (Former Staff Block)	21 LEGAHORY CENTRE	CRAIGAVON	BT65 5BE	Resource Centre	Owned
Cherrytrees Resource Centre	1a EDENDERRY GARDENS	PORTADOWN	BT63 5EA	Resource Centre	Owned
Trasna House	72 TRASNA WAY	LURGAN	BT66 8DN	Resource Centre	Owned
Chrysalis Centre	520 - 523, BURNSIDE	CRAIGAVON	BT65 5DE	Resource Centre	Owned
Millview Resource Centre	COLLEGE SQUARE WEST	BESSBROOK	BT35 7DG	Resource Centre	Owned
Oaklands	3&4, VICTORIA GROVE	ARMAGH	BT61 9DE	Respite Care	Owned
South Tyrone Woodlawn House Respite Centre	QUARRY LANE	DUNGANNON	BT70 1HX	Respite Unit	Owned
Longstone Riding Stables	73 LOUGHGALL ROAD	ARMAGH	BT61 7PR	Riding for Disabled	Owned
Oakridge SEC	20-26 COALISLAND ROAD	DUNGANNON	BT71 6LA	SEC	Owned
CAH - Pharmacy Store	68 LURGAN ROAD	PORTADOWN	BT63 5QQ	Store	Owned

BLOCK NAME	ADDRESS	TOWN / CITY	POST CODE	FUNCTION	OWNED/ LEASED
St Lukes Sewage Plant House	71 LOUGHGALL ROAD	ARMAGH	BT61 7NQ	Sewage Plant	Owned
Tower Hill Boundary Yard and Walls	62 VICTORIA STREET	ARMAGH	BT61 9DR	Site Details	Owned
St Lukes Hospital Site	71 LOUGHGALL ROAD	ARMAGH	BT61 7NQ	Site Only	Owned
South Tyrone Hospital Site	2 CARLAND ROAD	DUNGANNON	BT71 4AU	Site Only	Owned
Longstone Mullinure Grounds	73 LOUGHGALL ROAD	ARMAGH	BT61 7PR	Site Only	Owned
Tower Hill Hospital Site	62 VICTORIA STREET	ARMAGH	BT61 9DR	Site Only	Owned
Grounds	20-26 COALISLAND ROAD	DUNGANNON	BT71 6LA	Site Only	Owned
CAH - Macmillan Building	68 LURGAN ROAD	PORTADOWN	BT63 5QQ	Cancer Unit	Owned
Grounds	100 SLOAN STREET	LURGAN	BT66 8NT	Site Only	Owned
Former Banbridge Hospital site	3 BALLYGOWAN ROAD	BANBRIDGE	BT32 3QX	Site Only	Owned
External Site	5 HOSPITAL ROAD	NEWRY	BT35 8DR	Site Only	Owned
Grounds	58 NEWRY STREET	KILKEEL	BT34 4DP	Site Only	Owned
Drumalane Site - Ivybrook Gates and Pillars	28 DRUMALANE ROAD	NEWRY	BT35 8AP	Site Only	Owned
Social Education Centre	10 MOYALLAN ROAD	GILFORD	BT63 5JX	Social Education Centre	Owned
Banbridge SEC (Ballydown)	170, CASTLEWELLAN ROAD	BANBRIDGE	BT32 3SE	Social Education Centre	Owned
St Lukes Staff Accom	71 LOUGHGALL ROAD	ARMAGH	BT61 7NQ	Staff Accommodation	Owned
CAH - Medical Education Centre	68 LURGAN ROAD	PORTADOWN	BT63 5QQ	Training Unit	Owned
CAH - MRI Unit	68 LURGAN ROAD	PORTADOWN	BT63 5QQ	MRI Unit	Owned
CAH - Laboratory Offices	68 LURGAN ROAD	PORTADOWN	BT63 5QQ	Offices	Owned
CAH - Trauma Ward - PEU	68 LURGAN ROAD	PORTADOWN	BT63 5QQ	Ward	Owned
CAH - Stores Generator House	68 LURGAN ROAD	PORTADOWN	BT63 5QQ	Generator house	Owned
DHH - Nurses Home & School of Nursing	5 HOSPITAL ROAD	NEWRY	BT35 8DR	Staff Accommodation	Owned
DHH - Doctor's House No. 1	5 HOSPITAL ROAD	NEWRY	BT35 8DR	Staff Accommodation	Owned
DHH - Doctor's House No. 2	5 HOSPITAL ROAD	NEWRY	BT35 8DR	Staff Accommodation	Owned
DHH - Doctor's House No. 3	5 HOSPITAL ROAD	NEWRY	BT35 8DR	Staff Accommodation	Owned

BLOCK NAME	ADDRESS	TOWN / CITY	POST CODE	FUNCTION	OWNED/ LEASED
CAH - Catheterisation Laboratory	68 LURGAN ROAD	PORTADOWN	BT63 5QQ	Catheterisation Laboratory	Owned
St Lukes Gardeners Shed	71 LOUGHGALL ROAD	ARMAGH	BT61 7NQ	Storage	Owned
Tower Hill Hockley Building SHSSB	82 VICTORIA STREET	ARMAGH	BT61 9DR	Storage	Owned
Garage	17 SCARVA STREET	BANBRIDGE	BT32 3AD	Storage	Owned
St Lukes I.T. Storage Building	71 LOUGHGALL ROAD	ARMAGH	BT61 7NQ	Store	Owned
South Tyrone Grounds Store	2 CARLAND ROAD	DUNGANNON	BT71 4AU	Store	Owned
South Tyrone Community Aids	2 CARLAND ROAD	DUNGANNON	BT71 4AU	Store	Owned
South Tyrone Community Aids Store	2 CARLAND ROAD	DUNGANNON	BT71 4AU	Store	Owned
CAH - Thorndale Unit	68 LURGAN ROAD	PORTADOWN	BT63 5QQ	Cancer Unit	Owned
CAH - T&O Building	68 LURGAN ROAD	PORTADOWN	BT63 5QQ	Theatres	Owned
DHH - Hospital Radio Hut	5 HOSPITAL ROAD	NEWRY	BT35 8DR	Store	Owned
DHH - Aids and Appliance Store	5 HOSPITAL ROAD	NEWRY	BT35 8DR	Store	Owned
Incinerator	58 NEWRY STREET	KILKEEL	BT34 4DP	Store	Owned
Out Buildings	58 NEWRY STREET	KILKEEL	BT34 4DP	Store	Owned
Garage / Store	MILLVALE ROAD	BESSBROOK	BT35 7EH	Store	Owned
Garage / Store	MANSE ROAD	KILKEEL	BT34 4BN	Store	Owned
Garage / Store	COLLEGE SQUARE WEST	BESSBROOK	BT35 7DG	Store	Owned
Garage / Store	26 WINDSOR HILL	NEWRY	BT34 1ER	Store	Owned
Appliances store	8 Upper Edward Street	NEWRY	BT35 6AX	Store	Leased
Drumalane Site - Store & Glasshouse	28 DRUMALANE ROAD	NEWRY	BT35 8AP	Store & Glasshouse	Owned
CAH - Bluestone Psychiatric Unit	68 LURGAN ROAD	PORTADOWN	BT63 5QQ	Psychiatric Unit	Owned
Drumalane Site - Stores	28 DRUMALANE ROAD	NEWRY	BT35 8AP	Stores	Owned
South Tyrone Electrical Switch Room	2 CARLAND ROAD	DUNGANNON	BT71 4AU	Switchroom	Owned

BLOCK NAME	ADDRESS	TOWN / CITY	POST CODE	FUNCTION	OWNED/ LEASED
CAH - Doctors' Out of Hours	68 LURGAN ROAD	PORTADOWN	BT63 5QQ	Out of Hours Centre	Owned
CAH - The Brackens	68 LURGAN ROAD	PORTADOWN	BT63 5QQ	Offices	Owned
Old Boilerhouse / Limes Training Room	73 LOUGHGALL ROAD	ARMAGH	BT61 7PR	Training Unit	Owned
CAH - Waste Transfer Station	68 LURGAN ROAD	PORTADOWN	BT63 5QQ	Waste transfer	Owned
CAH - Ambulance Rest Room	68 LURGAN ROAD	PORTADOWN	BT63 5QQ	Staff Rest Room	Owned
St Lukes Haven Court	71 LOUGHGALL ROAD	ARMAGH	BT61 7NQ	Vacant	Owned
St Lukes Haven Close	71 LOUGHGALL ROAD	ARMAGH	BT61 7NQ	Vacant	Owned
St Lukes Gate Lodge	71 LOUGHGALL ROAD	ARMAGH	BT61 7NQ	Vacant	Owned
South Tyrone Boilerhouse	2 CARLAND ROAD	DUNGANNON	BT71 4AU	Vacant	Owned
Longstone Rosewood	73 LOUGHGALL ROAD	ARMAGH	BT61 7PR	Vacant	Owned
Tower Hill Incinerator	62 VICTORIA STREET	ARMAGH	BT61 9DR	Vacant	Owned
Victoria St Office Accom.	10 VICTORIA STREET	ARMAGH	BT61 9DT	Vacant	Owned
DHH - Vacant Building	8 HOSPITAL ROAD	NEWRY	BT35 8DR	Vacant	Owned
Mourne Hospital Outpatients	58 NEWRY STREET	KILKEEL	BT34 4DP	Vacant	Owned
Mourne Hospital Laundry	58 NEWRY STREET	KILKEEL	BT34 4DP	Vacant	Owned
Mourne Geriatric Unit	58 NEWRY STREET	KILKEEL	BT34 4DP	Vacant	Owned
Mourne Hosp Site Ambulance Station	58 NEWRY STREET	KILKEEL	BT34 4DP	Vacant	Owned
Downshire Place	5 DOWNSHIRE PLACE	NEWRY	BT34 1DZ	Vacant	Owned
Drumalane Site - Gate Lodge	28 DRUMALANE ROAD	NEWRY	BT35 8AP	Vacant	Owned
Greenhouses	RATHFRILAND ROAD	NEWRY	BT34 1HU	Vacant	Owned
CAH - Bin Store	68 LURGAN ROAD	PORTADOWN	BT63 5QQ	Bin Storage	Owned
South Tyrone Loane House	2 CARLAND ROAD	DUNGANNON	BT71 4AU	Ward / Day Hosp.	Owned
CAH - Oil Store @ Stores	68 LURGAN ROAD	PORTADOWN	BT63 5QQ	Oil Storage	Owned
Mullinure Health & Wellbeing Centre	71 LOUGHGALL ROAD	ARMAGH	BT61 7NQ	Wards / Day Hospital	Owned
LH - Wards / Administration	100 SLOAN STREET	LURGAN	BT66 8NT	Wards / Offices	Owned

BLOCK NAME	ADDRESS	TOWN / CITY	POST CODE	FUNCTION	OWNED/ LEASED
CAH - Gas Store	68 LURGAN ROAD	PORTADOWN	BT63 5QQ	Gas Storage	Owned
CAH - Oil Store @ Rear	68 LURGAN ROAD	PORTADOWN	BT63 5QQ	Oil Storage	Owned
CAH - Medical Gas Store	68 LURGAN ROAD	PORTADOWN	BT63 5QQ	Gas Storage	Owned
Longstone Cherryvilla	73 LOUGHGALL ROAD	ARMAGH	BT61 7PR	Wards Mentally H/capped	Owned
Longstone Cedarwood	73 LOUGHGALL ROAD	ARMAGH	BT61 7PR	Wards Mentally H/capped	Owned
Longstone Assessment & Treatment Unit	73 LOUGHGALL ROAD	ARMAGH	BT61 7PR	Wards Mentally H/capped	Owned
South Tyrone Clinical Waste Compound	2 CARLAND ROAD	DUNGANNON	BT71 4AU	Waste Compound	Owned
CAH - Equipment Store (Bluestone)	68 LURGAN ROAD	PORTADOWN	BT63 5QQ	Store	Owned
South Tyrone Estates Maint. Workshop	2 CARLAND ROAD	DUNGANNON	BT71 4AU	Workshop	Owned
Longstone Maint. Workshops	73 LOUGHGALL ROAD	ARMAGH	BT61 7PR	Workshop	Owned
Grounds	68 LURGAN ROAD	PORTADOWN	BT63 5QQ	Site Only	Owned
LH - Workshop	100 SLOAN STREET	LURGAN	BT66 8NT	Workshops	Owned
DHH - Workshop/Mortuary	5 HOSPITAL ROAD	NEWRY	BT35 8DR	Workshops	Owned

Appendix 6: Education Authority (Southern) Schools (September 2015)

<u>ENROLMENT OCT 14</u>	<u>NAME OF SCHOOL</u>	<u>ADDRESS 1</u>	<u>ADDRESS 2</u>	<u>ADDRESS 3</u>
	CONTROLLED NURSERY			
52	Banbridge Nursery School	3A Lurgan Road	BANBRIDGE	BT32 4AF
52	Downshire Nursery School	91A Primrose Gardens	BANBRIDGE	BT32 3EN
78	Dromore Nursery School	18 Banbridge Road	DROMORE	BT25 1NB
52	Edenderry Nursery School	Princess Way	Portadown	CRAIGAVON
53	Grove Nursery School	Ballinahone Avenue	ARMAGH	BT60 1EE
53	Harrison Nursery School	Lower Toberhewny Lane	Lurgan	CRAIGAVON
78	Millington Nursery School	Craigavon Avenue	Portadown	CRAIGAVON
29	Railway Street Nursery School	Railway Street	ARMAGH	BT61 7HP
79	Tandragee Nursery School	Madden Road	Tandragee	CRAIGAVON
	MAINTAINED NURSERY			
52	College Farm Nursery School	52 Lower Desert Lane	ARMAGH	BT61 8AN
107	Drumnamoe Nursery School	Levin Road Lurgan	CRAIGAVON	BT67 9EU
52	St John the Baptist Nursery School	Garvaghy Road	Portadown	CRAIGAVON
	CONTROLLED PRIMARY			
350	Abercorn Primary School	13A Newry Road	BANBRIDGE	BT32 3HR
312+26N	Ballydown Primary School	64 Lisnaree Road	BANBRIDGE	BT32 4JN
199+52N +6SP	Ballyoran Primary School	Ballyoran Park	Portadown	CRAIGAVON

152	Birches Primary School	14 Clonmakate Road	Portadown	CRAIGAVON
98	Bleary Primary School	6 Dean's Road	CRAIGAVON	BT66 8TD
319+27N	Bocombra Primary School	1 Old Lurgan Road	Portadown	CRAIGAVON
166+26N	Bronte Primary School	39 Ballinaskeagh Road	BANBRIDGE	BT32 5BL
342+52N +25SP	Carrick Primary School	Sloan Avenue	Lurgan	CRAIGAVON
138	Clare Primary School	58 Cloghoge Road	Clare	Tandragee
69	Darkley Primary School	71 Moss Row	Darkley	ARMAGH
84	Derryhale Primary School	116 Derryhale Road	Portadown	CRAIGAVON
185+27N	Dickson Primary School	Pollock Drive	Lurgan	CRAIGAVON
226+26N	Donacloney Primary School	Baird Avenue	Donacloney	CRAIGAVON
700	Dromore Central Primary School	2 Banbridge Road	DROMORE	BT25 1AD
225+26N	Drumadonnell Primary School	133 Dromara Road	Ballyroney	BANBRIDGE
213+52N	Drumgor Primary School	Drumgor Road	Brownlow	CRAIGAVON
78	Drumhillery Primary School	58 Drumhillery Road	Middletown	ARMAGH
32	Drumsallen Primary School	1 Dernasigh Road	Killylea	ARMAGH
416+25SP	Edenderry (Banbridge) Primary School	1A Lurgan Road	BANBRIDGE	BT32 4AF
363+27SP	Edenderry (Portadown) Primary School	Princess Way	Portadown	CRAIGAVON
296+26N	Fair Hill Primary School	4 Tullyniskey Road	Kinallen	Dromore
50	Foley Primary School	60 Ballymacnab Road	Tassagh	ARMAGH
69+26N	Gilford Primary School	41 Castle Hill	Gilford	CRAIGAVON
92	Hamiltonsbawn Primary School	113 Annareagh Road	Hamiltonsbawn	ARMAGH

348+52N	Hardy Memorial Primary School	22 New Line	Richhill	ARMAGH
332+55N	Hart Memorial Primary School	Charles Street	Portadown	CRAIGAVON
240	Iveagh Primary School	17 Castle Hill	Rathfriland	NEWRY
65	Killylea Primary School	150 Killylea Road	ARMAGH	BT60 4LN
649+78N	King's Park Primary School	24a Avenue Road	Lurgan	CRAIGAVON
99	Lisnadill Primary School	7 Drumconwell Road	ARMAGH	BT60 2PS
182+26N	Lurgan Model Primary School	Brownlow Terrace	Lurgan	CRAIGAVON
279+26N	Maralin Village Primary School	2 Steps Road	Magheralin	CRAIGAVON
329	Markethill Primary School	14 Mowhan Road	Markethill	ARMAGH
647	Millington Primary School	Craigavon Avenue	Portadown	CRAIGAVON
48	Milltown Primary School	167 Lurgan Road	BANBRIDGE	BT32 4NR
81	Mountnorris Primary School	7 Main Street	Mountnorris	ARMAGH
205	Moyallon Primary School	103 Moyallon Road	CRAIGAVON	BT63 5JY
133	Mullavilly Primary School	46 Mullavilly Road	Tandragee	CRAIGAVON
146+26N	Orchard County Primary School	65 Blackisland Road	Portadown	CRAIGAVON
115	Poyntzpass Primary School	1 Tandragee Road	Poyntzpass	NEWRY
120	Richmount Primary School	105 Moy Road	Portadown	CRAIGAVON
67	Scarva Primary School	80 Main Street	Scarva	CRAIGAVON
305	Tandragee Primary School	Portadown Road	Tandragee	CRAIGAVON
497+28SP	The Armstrong Primary School	College Hill	ARMAGH	BT61 9DF
117	The Cope Primary School	12 Ballygassey Road	Loughgall	ARMAGH

116+52N	Tullygally Primary School	21 Meadowbrook Road	Tullygally	CRAIGAVON
402+26N	Waringstown Primary School	1 Banbridge Road	Waringstown	CRAIGAVON
	MAINTAINED PRIMARY			
432+30N +9SP	Christian Brothers Armagh & Irish Medium Nursery School	Greenpark	Keady Road	ARMAGH
87	Clea Primary School	85 Clea Road	Keady	ARMAGH
232	Mount St Catherine's Primary School	Windmill Hill	ARMAGH	BT60 4BR
151	Our Lady's (Tullysaran) Primary School	12 Milltown Road	Artasooly	DUNGANNON
186	Our Lady's & St Mochua's Primary School	91 Derrynoose Road	Keady	ARMAGH
257	Presentation Primary School	Thomas Street	Portadown	CRAIGAVON
574+77N+19SP	St Anthony's Primary School	Tullygally Road	CRAIGAVON	BT65 5BL
427+52N	St Brendan's Primary School	Moyraverty	CRAIGAVON	BT65 5HS
166+29N	St Colman's (Annaclone) & All Saints Nursery Unit	24 Monteith Road	Annaclone	BANBRIDGE
111	St Colman's (Bann) Primary School	10 Drumnascamph Road	Laurencetown	CRAIGAVON
93	St Colman's (Dromore) Primary School	47 Gallows Street	DROMORE	BT25 1BD
157	St Francis of Assisi Primary School	Madden Row	Keady	ARMAGH
165	St Francis' (Aghaderg) Primary School	24 Donard View Road	Loughbrickland	BANBRIDGE
745+79N	St Francis' (Lurgan) and Irish Medium Unit	Francis Street	Lurgan	CRAIGAVON
24	St James' (Drumatee) Primary School	164 Derryraine Road	Markethill	ARMAGH
164	St Jarlath's (Blackwatertown) Primary School	89 Charlemont Road	Blackwatertown	DUNGANNON

44	St John's (Eglish) Primary School	57 Eglish Road	Portadown	CRAIGAVON
121	St John's (Gilford) Primary School	42A Castle Hill	Gilford	CRAIGAVON
164+26N	St John's (Middletown) Primary School	14 Rathtrillick Road	Middletown	ARMAGH
187	St John's (Moy) Primary School	15 Benburb Road	Moy	DUNGANNON
435	St John the Baptist Primary School and Irish Medium Unit	250 Garvaghy Road	Portadown	CRAIGAVON
127	St Joseph's (Madden) Primary School	50 Farnaloy Road	Madden	ARMAGH
127	St Joseph's and St James' Primary School	34 Chapel Street	Poyntzpass	NEWRY
207	St Malachy's (Armagh) Primary School	Chapel Lane	ARMAGH	BT61 7EG
449+27N +27SP	St Mary's (Banbridge) Primary School	31 Reilly Park	BANBRIDGE	BT32 3DJ
148	St Mary's (Derrymore) Primary School	20A Derrymore Road	Gawley's Gate	CRAIGAVON
108	St Mary's (Derrytrasna) Primary School	191 Derrytrasna Road	Lurgan	CRAIGAVON
173+26N	St Mary's (Granemore) Primary School	123 Granemore Road	Keady	ARMAGH
75	St Mary's (Maghery) Primary School	84 Maghery Road	DUNGANNON	BT71 6PA
109	St Mary's (Rathfriland) Primary School	67 Downpatrick Street	Rathfriland	NEWRY
49	St Michael's (Clady) Primary School	62 Cladymore Road	ARMAGH	BT60 2EP
103	St Oliver Plunkett's (Ballyhegan) Primary School	14 Ballyhegan Road	Kilmore	ARMAGH
213+27N	St Patrick's (Aghacommon) Primary School	14 Derrymacash Road	Lurgan	CRAIGAVON
455	St Patrick's (Armagh) Primary School	Loughgall Road	ARMAGH	BT61 7NN
81	St Patrick's (Derrynaseer) Primary School	3 Aghalee Road	Aghagallon	CRAIGAVON

83	St Patrick's (Drumgreenagh) Primary School	40 Longstone Hill Road	Rathfriland	NEWRY
142	St Patrick's (Magheralin) Primary School	12 Ballymacbredan Road	Magheralin	CRAIGAVON
146	St Peter's (Collegelands) Primary School	90 Collegelands Road	Charlemont	DUNGANNON
172	St Teresa's (Lurgan) Primary School	36 Tarry Lane	Lurgan	CRAIGAVON
633	Tannaghmore Primary School	Lake Street	Lurgan	CRAIGAVON
	OTHER MAINTAINED PRIMARY			
294+52N	Seagoe (Church of Ireland)	83 Seagoe Road	Portadown	CRAIGAVON
28	The Drelincourt (Church of Ireland)	23A Ballinahone Avenue	ARMAGH	BT60 1EE
	GRANT MAINTAINED INTEGRATED PRIMARY			
410	Bridge Integrated Primary School	70 Ballygowan Road	BANBRIDGE	BT32 3EL
235+54N	Portadown Integrated Primary School	1 Kernan Road	Portadown	CRAIGAVON
190+27N	Saints and Scholars Integrated Primary School	33 Killuney Park Road	Portadown Road	ARMAGH
	CONTROLLED SECONDARY			
553+44SP	Banbridge High School	69A Primrose Gardens	BANBRIDGE	BT32 3EP
248+24SP	City of Armagh High School	Alexander Road	ARMAGH	BT61 7JH
611+39SP	Clounagh Junior High School	Brownstown Road	Portadown	CRAIGAVON
926	Dromore High School	31 Banbridge Road	DROMORE	BT25 1ND
449	Killicomaine Junior High School	Upper Church Lane	Portadown	CRAIGAVON
602	Lurgan Junior High School	Toberhewny Lane	Gilford Road	Lurgan

496	Markethill High School	61 Mowhan Road	Markethill	ARMAGH
306	Rathfriland High School	76 Newry Street	Rathfriland	NEWRY
282+19SP	Tandragee Junior High School	Armagh Road	Tandragee	CRAIGAVON
	CONTROLLED INTEGRATED SECONDARY			
312	Brownlow College	Tullygally Road	CRAIGAVON	BT65 5BS
	MAINTAINED SECONDARY			
181+20SP	Drumcree College	4 Moy Road	Portadown	CRAIGAVON
1157	Lismore Comprehensive	Drumgask	CRAIGAVON	BT65 5DU
1164	St Catherine's College and IMU	38 Convent Road	ARMAGH	BT60 4BJ
291+30SP	St Patrick's College (Banbridge)	Scarva Road	BANBRIDGE	BT32 3AS
1045	St Patrick's High School	Middletown Road	Keady	ARMAGH
	GRANT MAINTAINED INTEGRATED COLLEGES			
584	New-Bridge Integrated College	25 Donard View Road	Loughbrickland	BANBRIDGE
	CONTROLLED SENIOR HIGH - NON-GRAMMAR			
610	Craigavon Senior High School	Portadown Campus	26-34 Lurgan Road	Portadown
		Lurgan Campus	18 Alexandra Crescent	Lurgan
	CONTROLLED SENIOR HIGH - GRAMMAR			

453	Lurgan College	9 College Walk	Lough Road	Lurgan
791	Portadown College	Killicomaine Road	Portadown	CRAIGAVON
	CONTROLLED GRAMMAR			
1324	Banbridge Academy	Lurgan Road	BANBRIDGE	BT32 4AQ
	VOLUNTARY GRAMMAR			
722	Royal School Armagh	College Hill	ARMAGH	BT61 9DH
872	St Patrick's Grammar School	Cathedral Road	ARMAGH	BT61 7QZ
	St Ronan's College	Cornakinegar Campus (Year 13+14)	12 Cornakinnegar Road	Lurgan
		Waring Street Campus (Year 8,9+10)	Waring Street	Lurgan,
		Francis Street Campus (Year 11+12)	Francis Street	Lurgan,

NB St. Ronan's College opened in September 2015 following the amalgamation of St Mary's High School, Lurgan, St Michael's Grammar School, Lurgan and St Paul's Junior High School, Lurgan. It currently operates 3 campuses on the premises of the original schools.

	CONTROLLED SPECIAL			
132	Ceara School	Sloan Street	Lurgan	CRAIGAVON
85	Donard School	22A Castlewellan Road	BANBRIDGE	BT32 4XY
98	Lisanally School	85 Lisanally Lane	ARMAGH	BT61 7HF
BEHAVIOUR SUPPORT TEAM AND EOTAS (EDUCATION OTHERWISE THAN AT SCHOOL)				
Behaviour Support Team	Lough Road	Lurgan	CRAIGAVON	BT66 6LX

Behaviour Support Team	Lough Road	Lurgan	CRAIGAVON	BT66 6LX
Behaviour Support Team	Lough Road	Lurgan	CRAIGAVON	BT66 6LX
LRLC Primary Partnership	27 Lough Road	Lurgan	CRAIGAVON	BT66 6JJ
LRLC Key Stage 4	27 Lough Road	Lurgan	CRAIGAVON	BT66 6JJ
Exceptional Teaching Arrangements	Silverwood Centre	Lough Road	Lurgan	BT66 6LX
SOUTHERN REGIONAL COLLEGE				
Armagh Campus	Lonsdale Building	College Hill	ARMAGH	BT61 7HN
Banbridge Campus	Castlewellan Road	BANBRIDGE	BT32 4AY	
Lurgan Campus	Kitchen Hill	Lurgan	CRAIGAVON	BT66 6AZ
Portadown Campus	36 Lurgan Road	Portadown	CRAIGAVON	BT63 5BL
EDUCATION PROVISION CENTRES				
TEACHERS' CENTRES				
Armagh Teachers' Centre	Woodford	1 Markethill Road	ARMAGH	BT60 1NR
CASS@ Silverwood Centre	Lough Road	Lurgan	CRAIGAVON	BT66 6LX
MULTI MEDIA CENTRE				
AmmA - Armagh Multi Media Access	The Market House	Market Street	ARMAGH	BT61 7BU
SILVERWOOD CENTRE				

Southern Sports Partnership	Silverwood Centre	Lough Road	Lurgan	CRAIGAVON
Autism Advisory and Intervention Service	Silverwood Centre	Lough Road	Lurgan	CRAIGAVON
CLOUNAGH CENTRE				
Clounagh Centre	38 Brownstown Road	Portadown	CRAIGAVON	BT62 3PY
SOUTHERN C2K CENTRE				
Southern C2K Centre	Tullygally Road	CRAIGAVON	BT65 5BS	
MUSIC CENTRES				
Music Service	Bann House	Bridge Street	Portadown	CRAIGAVON
Portadown Music Centre	Bann House	Bridge Street	Portadown	CRAIGAVON
READING CENTRES				
Armagh / Dungannon / Cookstown Reading Centre	c/o Armagh Teachers' Centre			
Banbridge Reading Centre	c/o Edenderry Primary School Banbridge			
Craigavon Reading Centre	c/o Drumgor Primary School			
CONTROLLED YOUTH CENTRES				
Armagh Youth Centre	59 Lisanally Lane	ARMAGH	BT61 7HF	

Banbridge Youth Centre	Hill Street	BANBRIDGE	BT32 4DP	
ENP	c/o Banbridge Youth Centre	Hill Street	BANBRIDGE	BT32 4DP
Brownlow Resource (Youth Centre)	Brownlow Road	CRAIGAVON	BT65 5DL	
Dromore Youth Centre	Dromore High School	31 Banbridge Road	DROMORE	BT25 1ND
Drumgor Youth Centre	c/o Brownlow Resource Youth Centre	Brownlow Road	CRAIGAVON	BT65 5DL
Lurgan Youth Centre	Toberhewny Lane	Mourne Road	Lurgan	CRAIGAVON
Taghnevan Youth and Community Centre	Glenholme Park	Lurgan	CRAIGAVON	BT66 8SL
Tullygally Youth Centre	c/o Brownlow Resource Youth Centre	Brownlow Road	CRAIGAVON	BT65 5DL
Keady Youth Development Project	The Old Mill	Kinelowen Street	Keady	ARMAGH
YOUTH SERVICES				
Armagh Youth Office	59 Lisanally Lane	ARMAGH	BT61 7HF	
YOUTH SERVICE DIVISIONAL YOUTH SERVICES				
Craigavon, Banbridge & Cookstown DYO	Bann House	Bridge Street	Portadown	CRAIGAVON
Dungannon, Armagh and Newry & Mourne DYO	Unit 2	4 Church Lane	DUNGANNON	BT71 6AA

EDUCATION WELFARE SERVICE				
Chief Education Welfare Officer	3 Charlemont Place	The Mall	ARMAGH	BT61 9AX
Deputy Chief Education Welfare Officer	Tullygally PS	21 Meadowbrook Rd	Lurgan	CRAIGAVON
Designated Officer for Child Protection	Tullygally PS	21 Meadowbrook Rd	Lurgan	CRAIGAVON
Designated Officer for Child Protection	Tullygally PS	21 Meadowbrook Rd	Lurgan	CRAIGAVON
Designated Officer for Child Protection	Tullygally PS	21 Meadowbrook Rd	Lurgan	CRAIGAVON
Project Worker	25 Railway Street	ARMAGH	BT61 7HP	
Armagh & Dungannon Areas	25 Railway Street	ARMAGH	BT61 7HP	
Craigavon & Banbridge Areas	Tullygally PS	21 Meadowbrook Rd	Lurgan	CRAIGAVON
	Craigavon SHS	26 Lurgan Road	PORTADOWN	BT63 5BL
	Banbridge HS	Primrose Gardens	BANBRIDGE	BT32 3EP
EXTENDED TRAVELLER EDUCATION SUPPORT SERVICE (TESS)				
Regional Adviser	EA Southern Region	3 Charlemont Place	The Mall	ARMAGH
Assistant Advisory Officer	EA Southern Region	3 Charlemont Place	The Mall	ARMAGH

Education Co-ordinator	Tullygally Centre	21 Meadowbrook Park	Lurgan	CRAIGAVON
Education Co-ordinator	Tullygally Centre	21 Meadowbrook Park	Lurgan	CRAIGAVON
Education Co-ordinator	Tullygally Centre	21 Meadowbrook Park	Lurgan	CRAIGAVON
EXTENDED SCHOOLS				
Co-ordinator	Beresford Row	The Mall	ARMAGH	BT61 9AX
Assistant Co-ordinator	Beresford Row	The Mall	ARMAGH	BT61 9AX
PUPIL PERSONAL DEVELOPMENT SERVICES AND DISPUTE AVOIDANCE AND RESOLUTION SERVICE				
Dispute Avoidance and Resolution Service	3 Charlemont Place	The Mall	ARMAGH	BT61 9AX
Pupil Personal Development Services	3 Charlemont Place	The Mall	ARMAGH	BT61 9AX
Critical Incident Response Team	3 Charlemont Place	The Mall	ARMAGH	BT61 9AX
PYSCHOLOGY OFFICES				
Armagh	3 Charlemont Place	The Mall	ARMAGH	BT61 9AX
Portadown	Bann House	Bridge Street	Portadown	CRAIGAVON

Armagh City Banbridge and Craigavon Borough Council – Planning Department
Marlborough House
Central Way, Craigavon
planning@armaghbanbridgecraigavon.gov.uk Tel:03002007830 (NI) or 02838313690